

Specialized Claims Solutions TM

Delivering excellence one claim at a time

A Guide to Heavy Equipment Inspections

Copyright 2015. All Rights Reserved. Do Not Duplicate or Distribute. Sole Property of Specialized Claims Solutions. Not for Public Viewing and is limited to education training purposes only for SCS Employee's and Independent Contractors. None of this material contained in the manual can be marketed or distributed outside the SCS employee and independent appraiser realm. This work is for limited access only. The diagrams contained in this training guide are factual diagrams not intended for use beyond the SCS Company realm and is strictly for educational purposes only. Violation of this disclaimer may result in legal action against the person(s) or company in violation.



Specialized **Claims** Solutions

Proper Photographs for a Tractor

Sample Exterior Photographs



**If Damage to
Escape & Cargo
Doors**



**Measurement for
All Impact Area:
Must show eye level
and touching
ground**



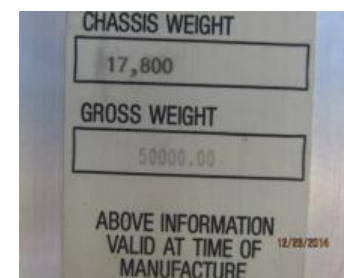
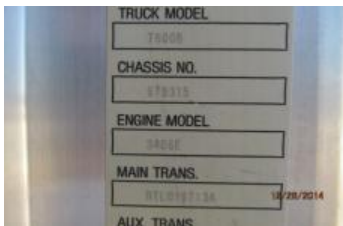
**All Tires: Size,
Brand, Model,
Thread Depth,
Wear Photo's**





Specialized **Claims** Solutions Proper Photographs for a Tractor

Sample Tag ID Photographs



What Information Is Needed In Photographs (when available)

- ◆ VIN Number
- ◆ Truck Model & Make
- ◆ Chassis Number
- ◆ Engine Serial Number
- ◆ Engine Make and Model
- ◆ Transmission Make
- ◆ Transmission Mode
- ◆ Front Axle Rating
- ◆ Rear Axle Ratings
- Gross Weight
- Chassis Weight
- Paint Code/ID
- Manufacture Date
- Rim Size
- Tire Size
- Tire Width
- # Transmission Gears
- License Plate
- ◇ Mileage
- ◇ Sleeper Size (inches)
- ◇ Wheelbase
- ◇ BBC (front bumper to back of cab– inches)
- ◇ Suspension Type
- ◇ Wheel Power (_ x_)
- ◇ # Axles
- ◇ Fifth Wheel Type
- ⇒ Unit #
- ⇒ Horse Power
- ⇒ Hours
- ⇒ Fuel Tank Capacity
- ⇒ Fuel Tank Dimensions
- ⇒ # of Fuel Tanks
- ⇒ All Tire Thread Depths
- ⇒ Wheel Type



Specialized **Claims** Solutions Proper Photographs for a Tractor

Interior Photographing





Specialized **Claims** Solutions

Proper Photographs for a Trailer

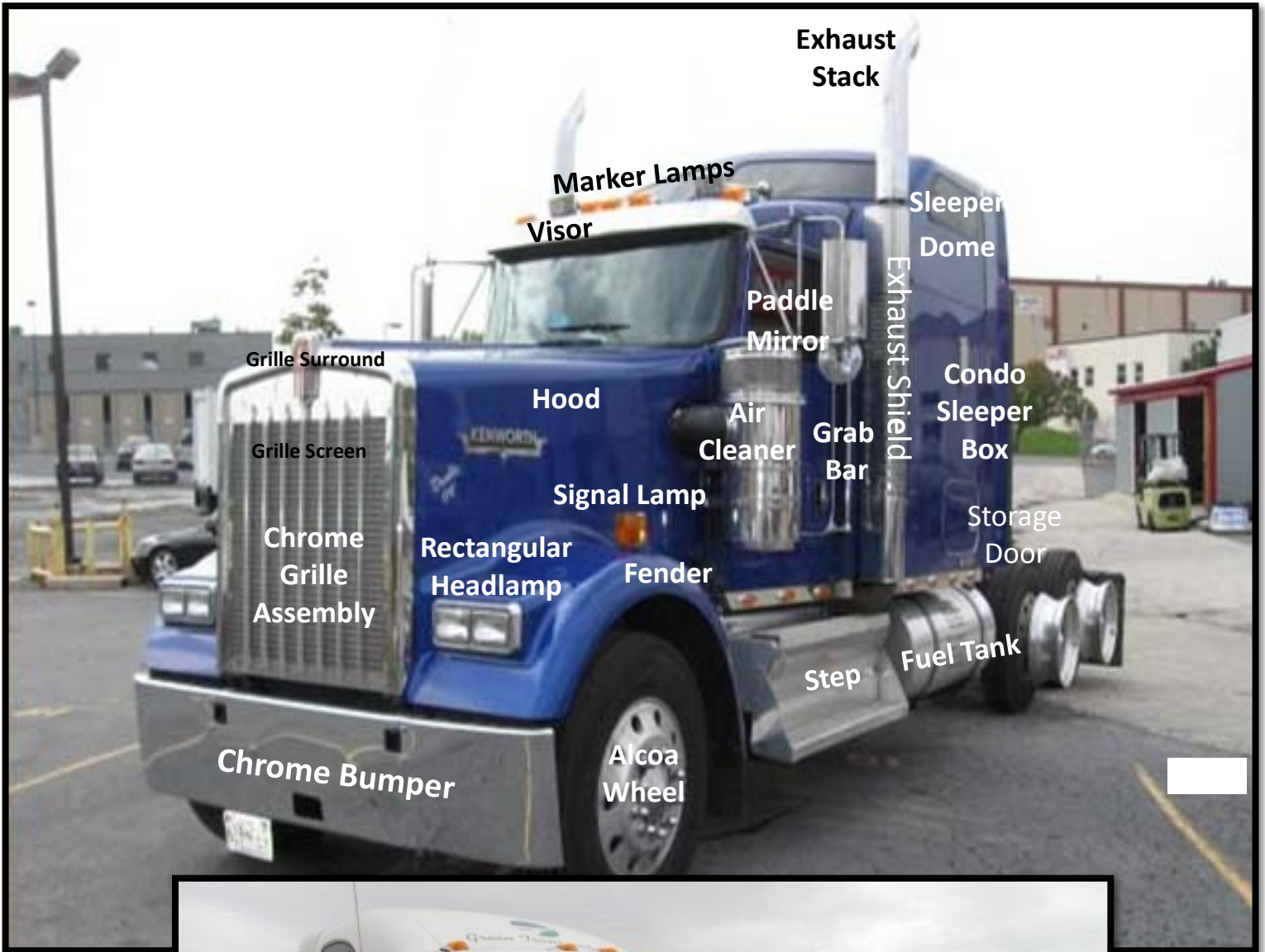


- ◆ 4 Corners
- ◆ 2 Impact photos each impact
- ◆ 1 Measurement of damage
- ◆ Photo all VIN/ID Tags
- Tire Sizes
- Tire Thread Gauge
- Tire wear patterns
- Landing Gear
- * Floor
- * Interior Roof
- * Interior Walls
- * Any Elevator
- ⇒ Front and Rear Panels
- ⇒ Reefer Unit and Tag
- ⇒ Suspension
- ⇒ Hours/Meters



Specialized **Claims** Solutions

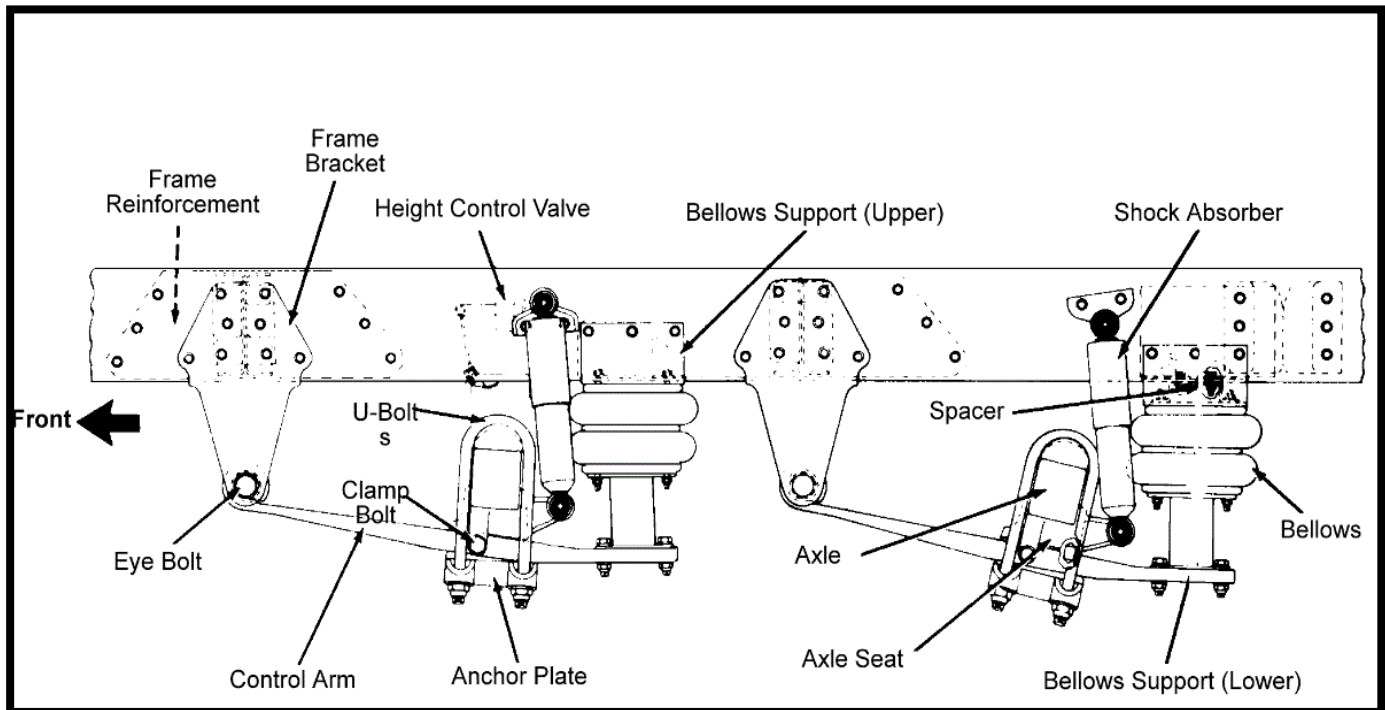
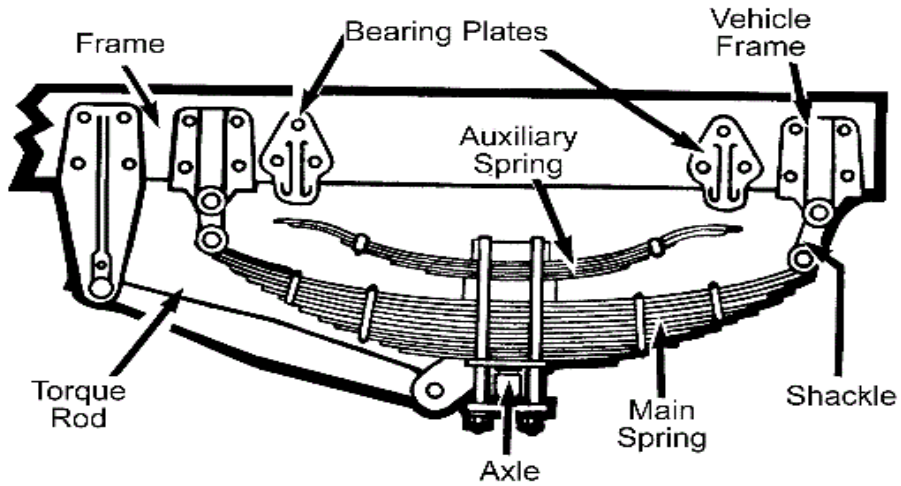
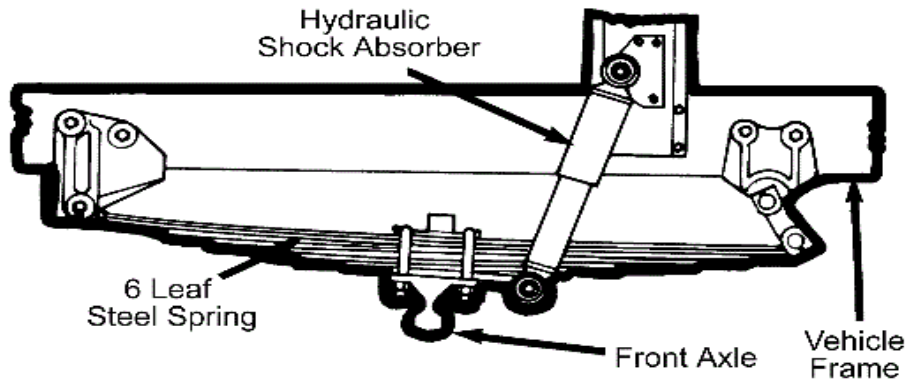
Tractor Nomenclature





Tractor Nomenclature

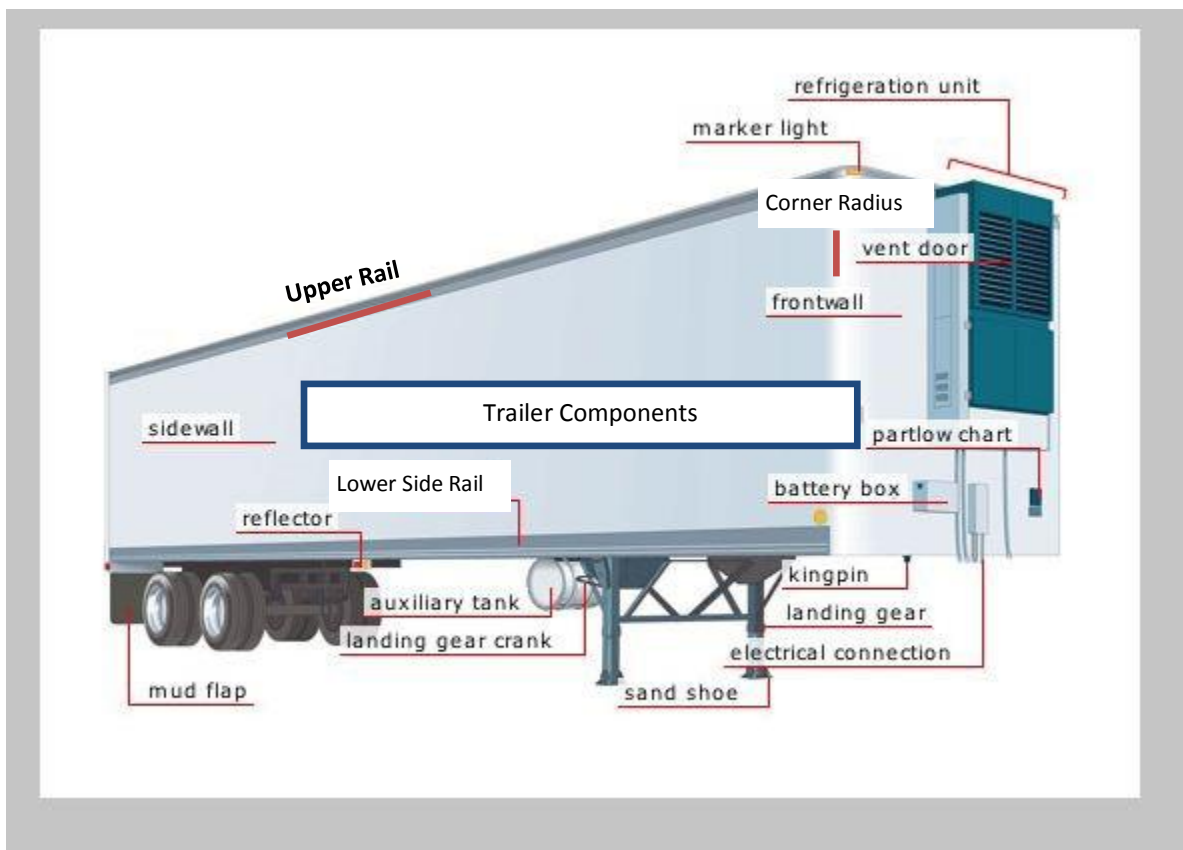
Axles, Suspension



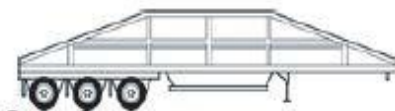


Specialized **Claims** Solutions

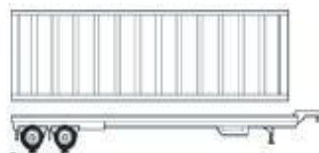
Trailer Nomenclature



AutoTransport



Bottom Dump



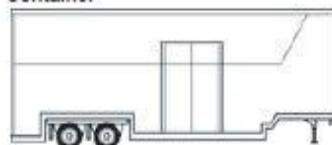
Container



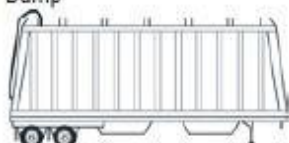
Dump



Doubles



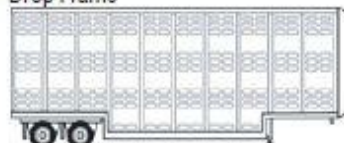
Drop Frame



Grain



Liquid Tank



Livestock



Logger



Low Boy



Platform Flatbed



Reefer



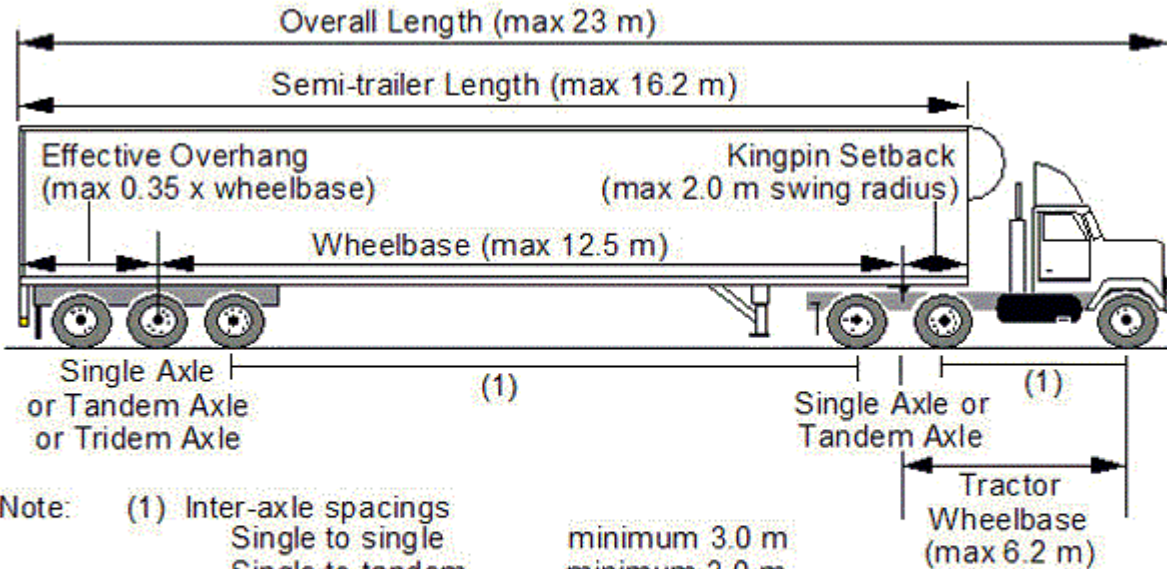
Van



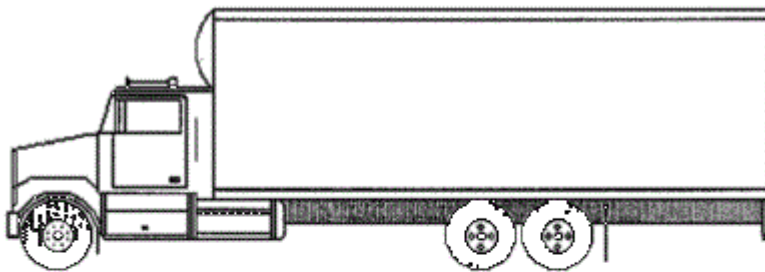
Dry Bulk



Tractor Nomenclature

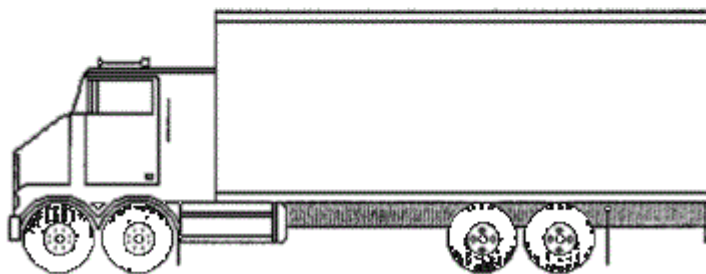


- Note:
- (1) Inter-axle spacings
 - Single to single minimum 3.0 m
 - Single to tandem minimum 3.0 m
 - Tandem to tandem minimum 5.0 m
 - Tandem to tridem minimum 5.5 m
 - (2) Tandem axle spread from 1.2 to 1.85 m
 - (3) Tridem axle spread from 2.4 to 3.7 m



Max 8000 kg¹

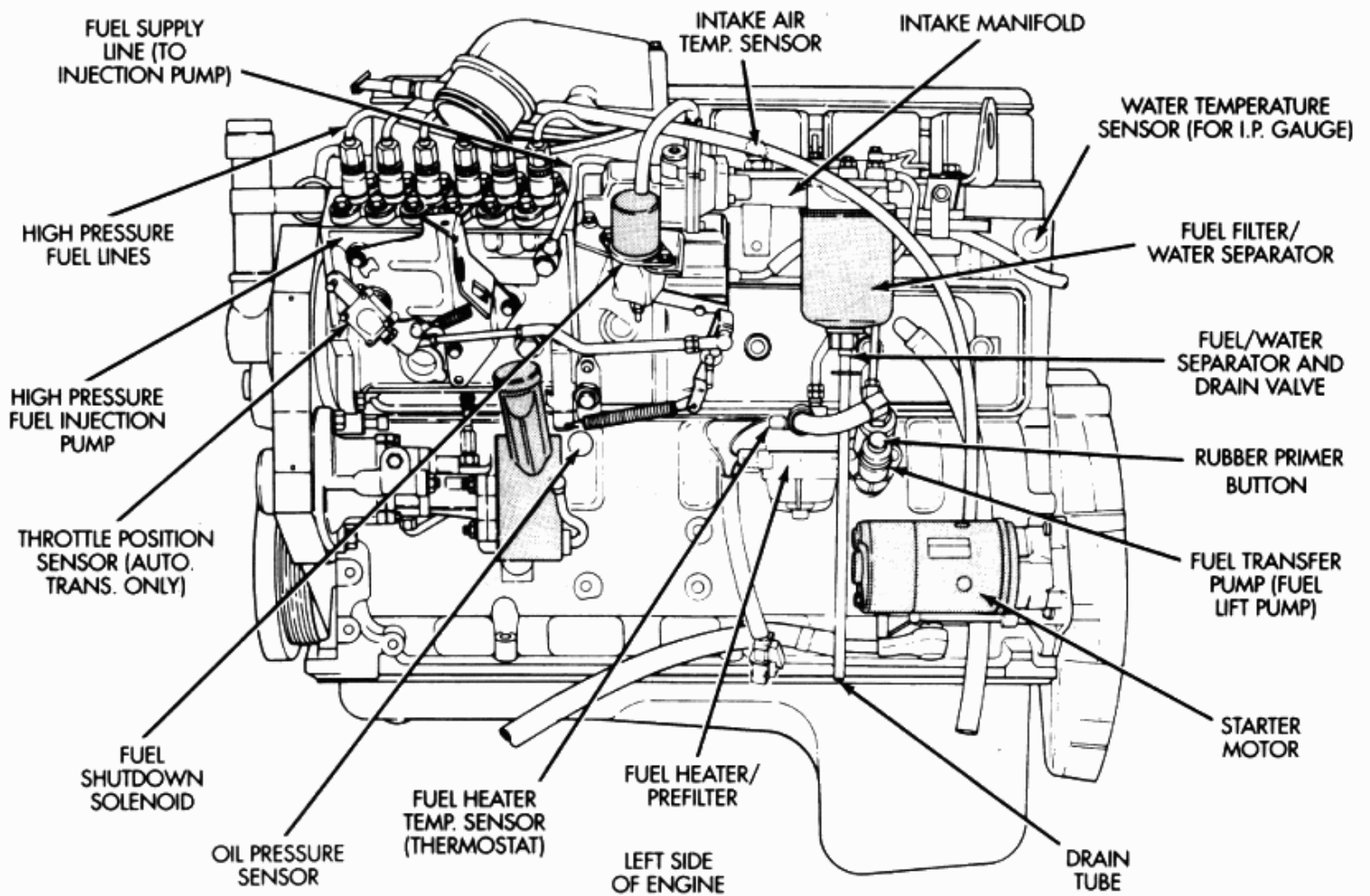
Single - Max 9100 kg
Tandem - Max 18 000 kg



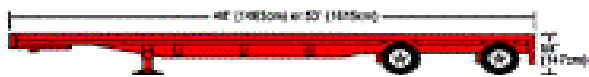
Tandem Steering Axle
Max 16 000 kg

Tandem Drive Axle
Max 18 000 kg

12VALVE CUMMINS DIESEL ENGINE - SENSOR & FUEL SYSTEM COMPONENT LOCATIONS



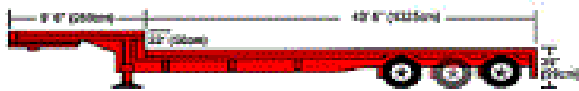
48' & 53' Flatbed



Expandable Flatbed 48' & 53'



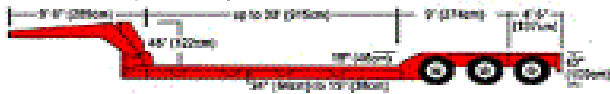
53' Drop Deck with Sliding Rear Axle



Expandable Drop Deck 3 Axle



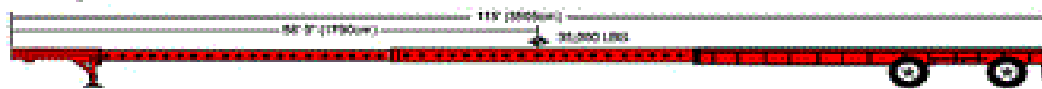
Double Drop Lowboy RGN 2 or 3 Axle



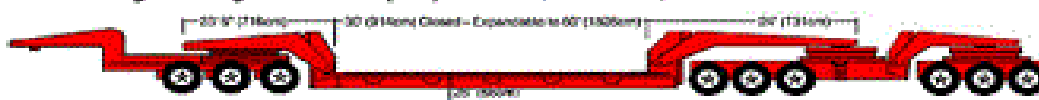
RGN Expandable Double Drop Deck 2 Axle



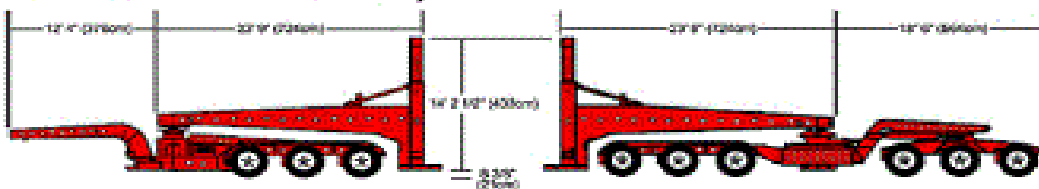
115' Expandable Flatbed



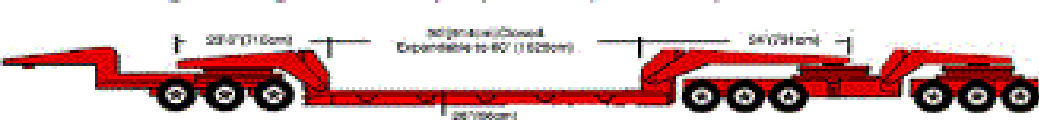
6 & 9 Axle High Tonnage Double Drop Expandable (Floor Deck)



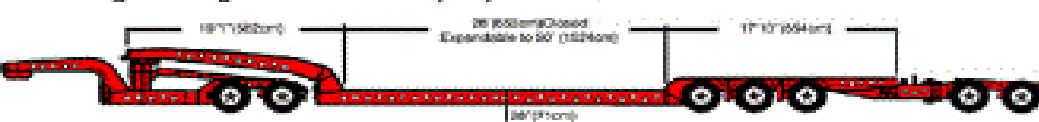
6 & 9 Axle Schnable with Steerable Dolly



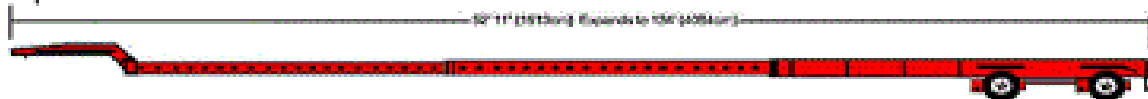
10 & 13 Axle High Tonnage Double Drop Expandable (Floor Deck)



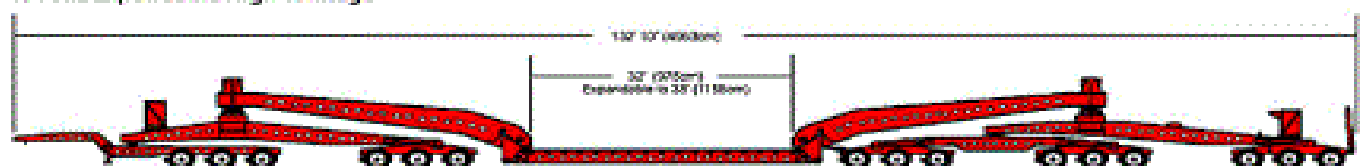
10 Axle High Tonnage RGN Double Drop Expandable



Expandable Blade Trailer



19 Axle Expandable High Tonnage



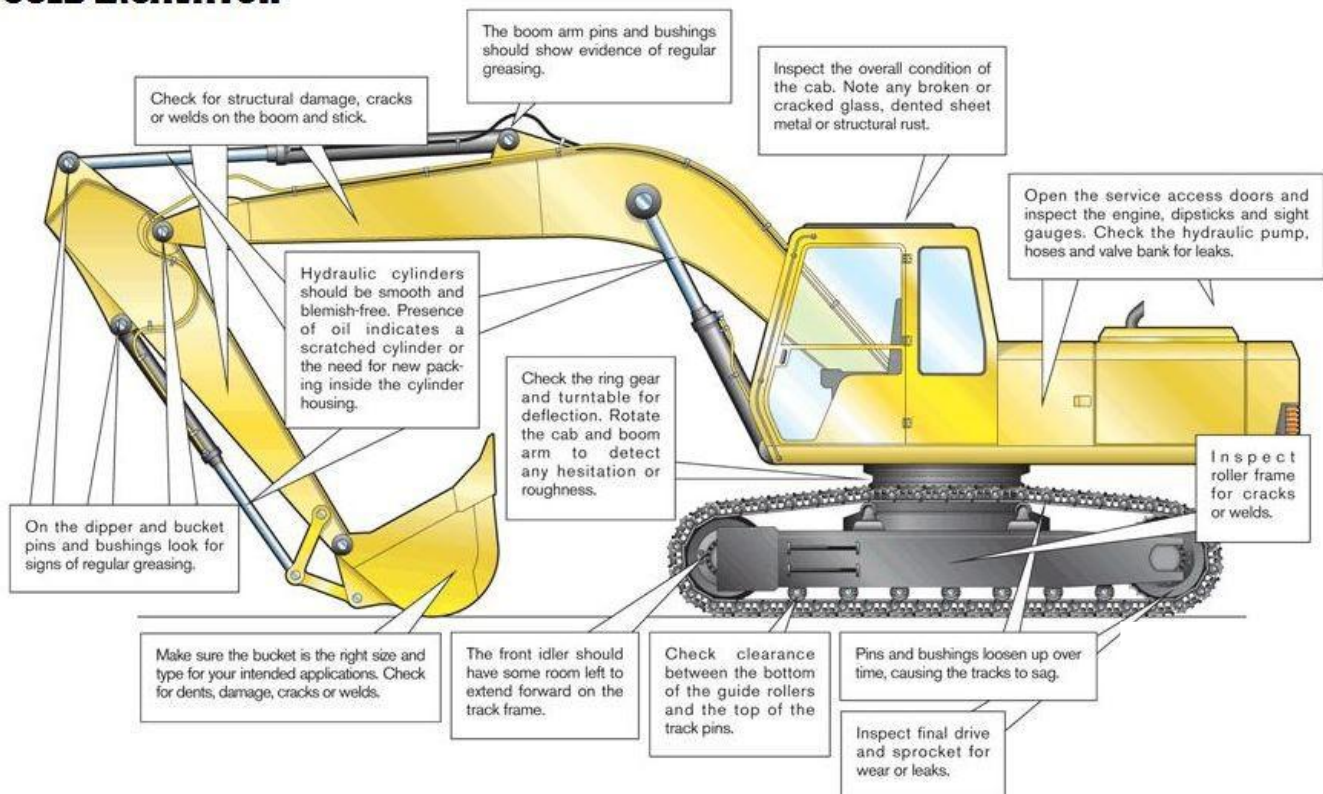


Specialized **Claims** Solutions

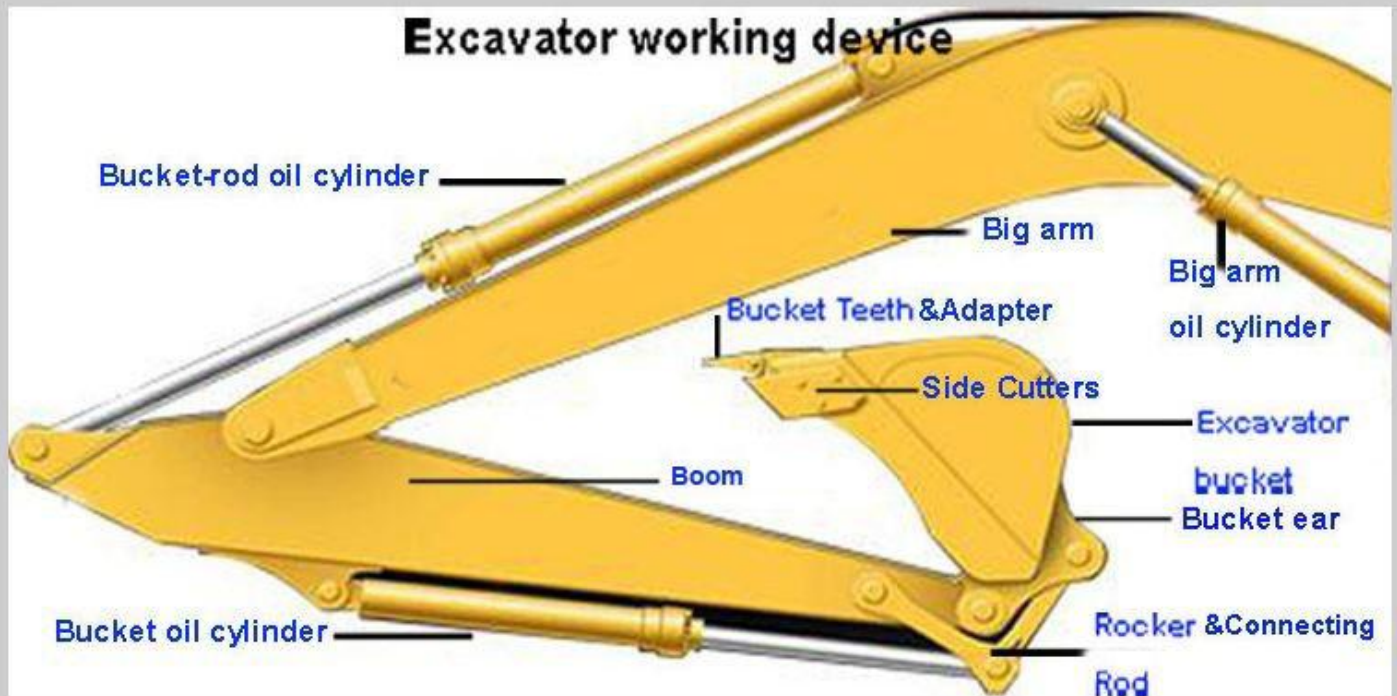
Excavator Nomenclature

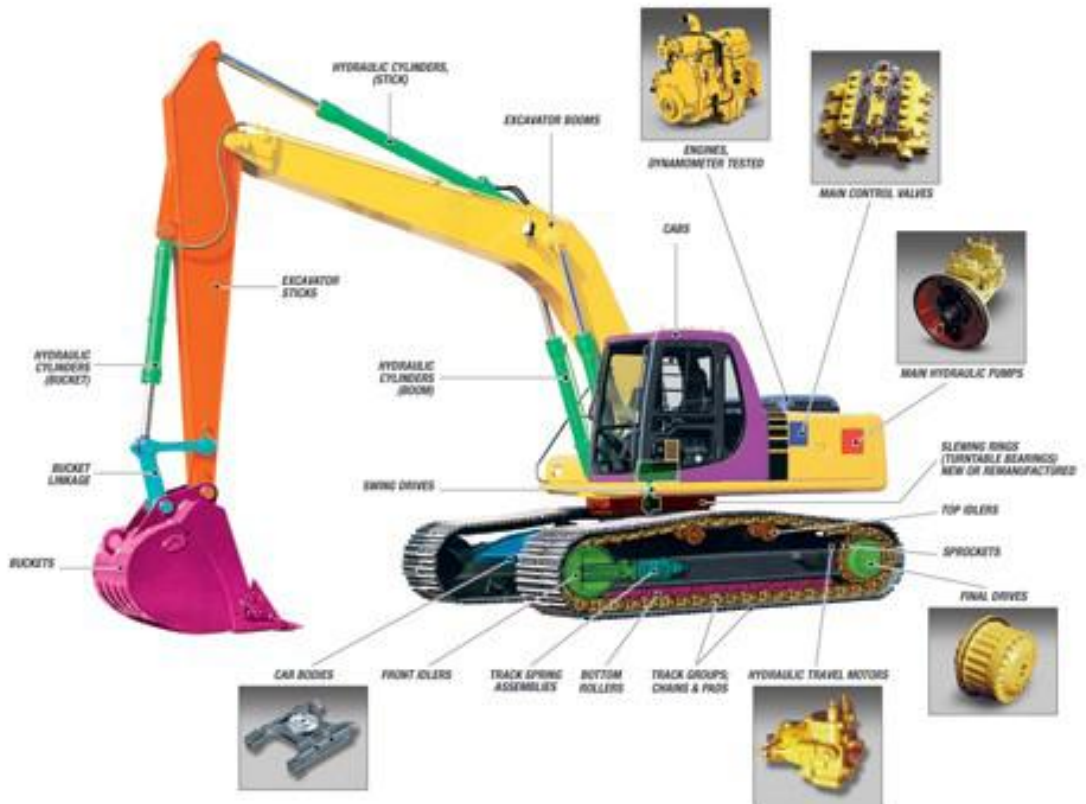
How to inspect a

USED EXCAVATOR



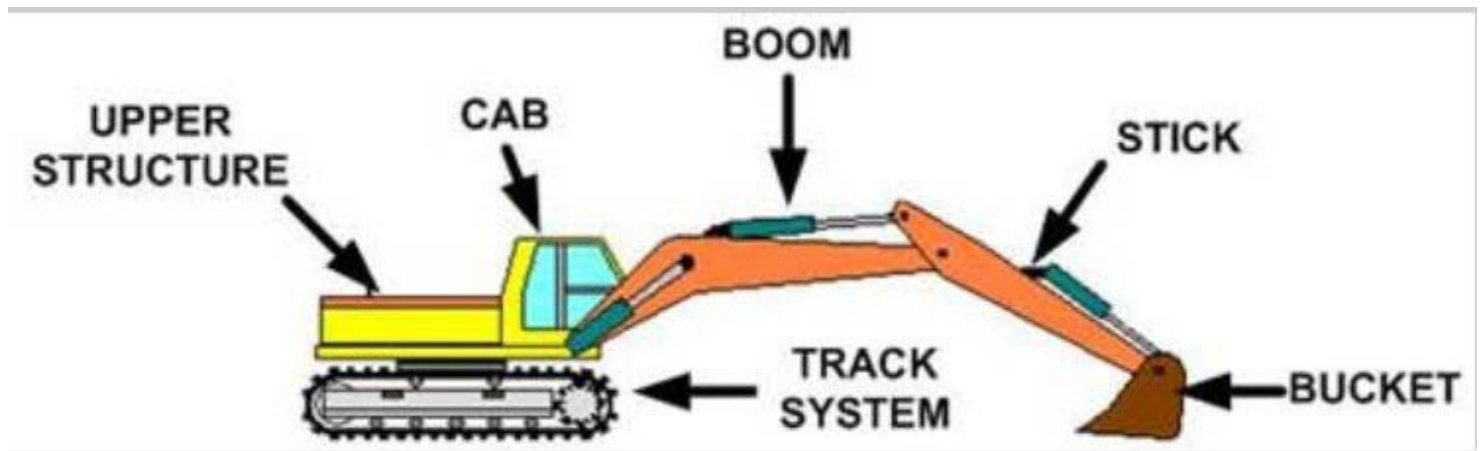
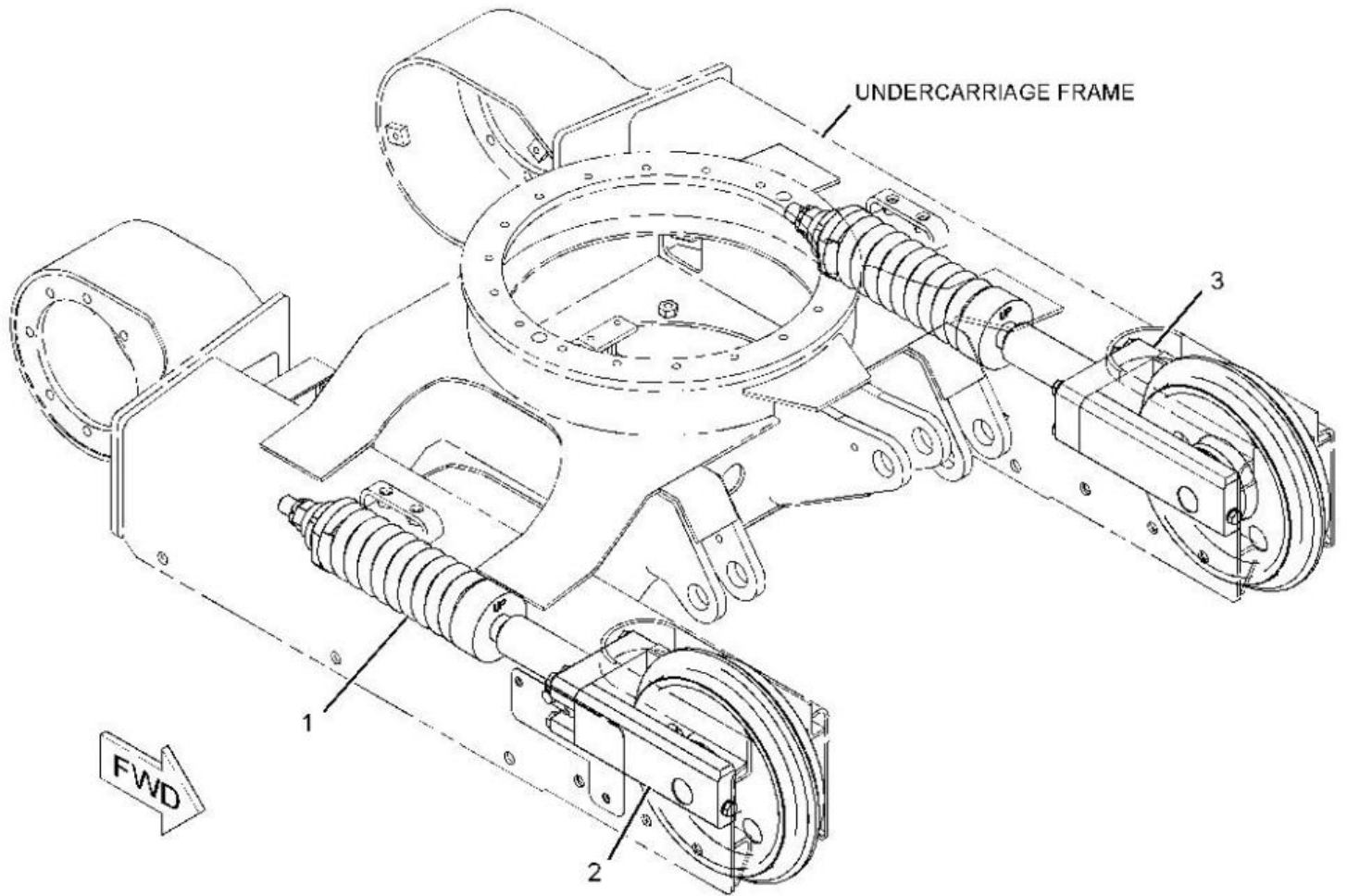
Excavator working device







Excavator Nomenclature





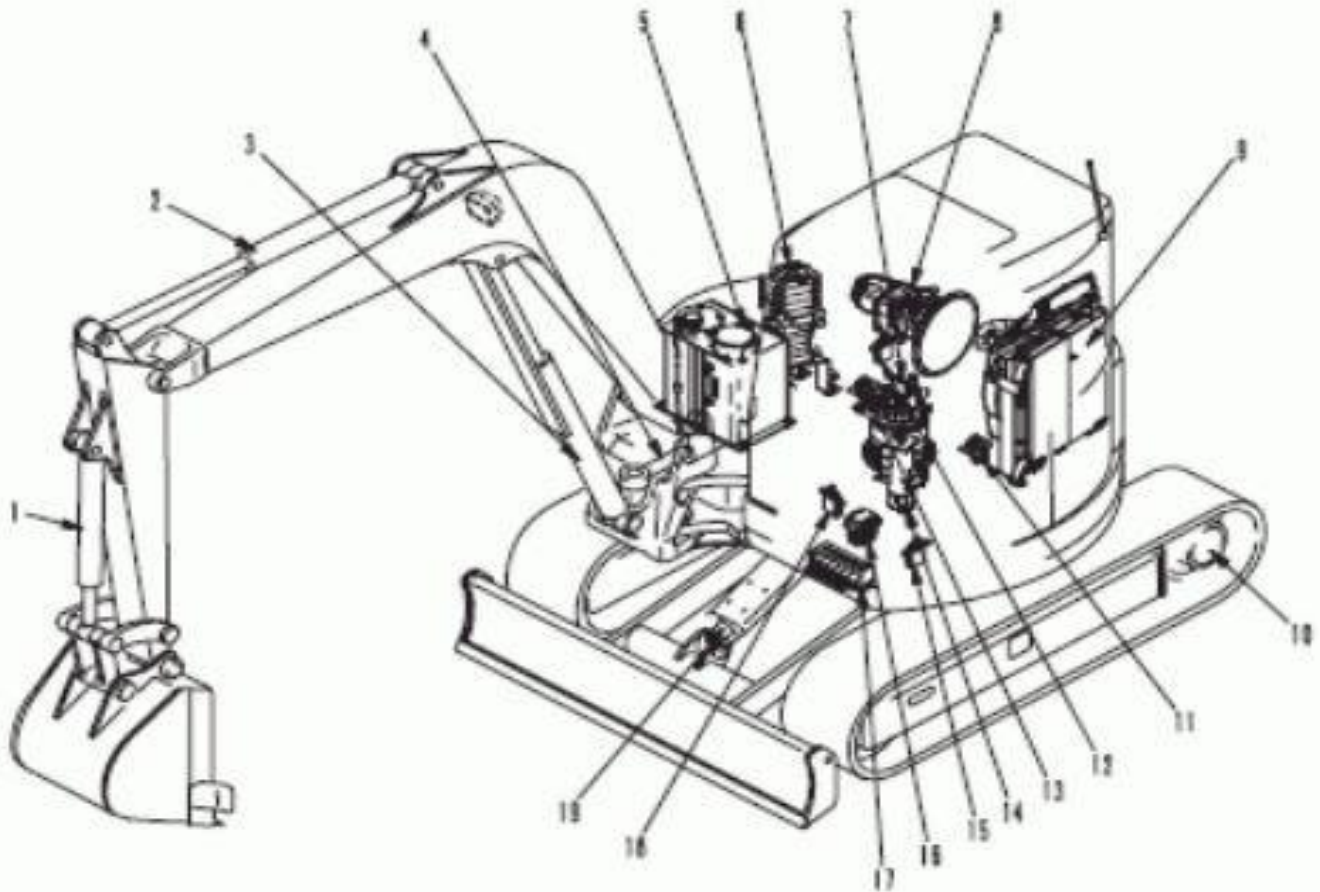
Specialized Claims Solutions

Excavator Nomenclature

STRUCTURE, FUNCTION AND
MAINTENANCE STANDARD

ARRANGEMENT OF HYDRAULIC COMPONENTS

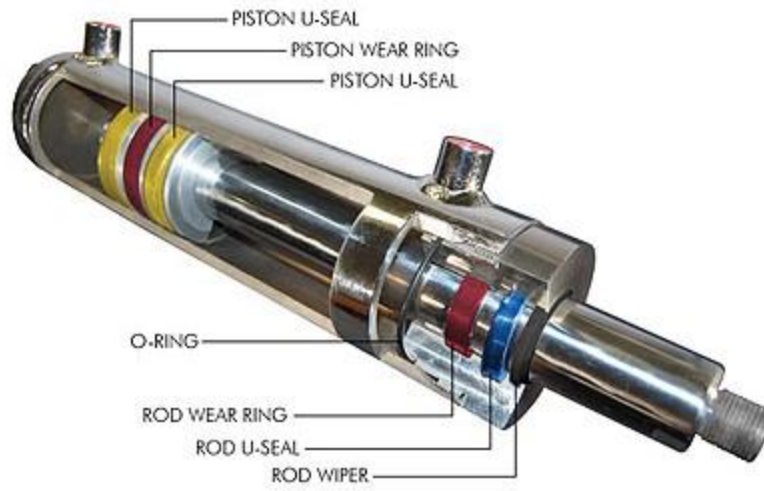
ARRANGEMENT OF HYDRAULIC COMPONENTS



9J861372

1. Bucket cylinder
2. Arm cylinder
3. Boom cylinder
4. Boom swing cylinder
5. Hydraulic tank
6. Control valve
7. Swing motor
8. Hydraulic pump
9. Oil cooler
10. Travel motor

11. Left work equipment PPC valve
12. Blade PPC valve
13. Right work equipment PPC valve
14. Center swivel joint
15. Service PPC valve (Machine to which attachments can be installed)
16. Travel PPC valve
17. 6-spool solenoid valve
18. Boom swing PPC valve
19. Blade cylinder





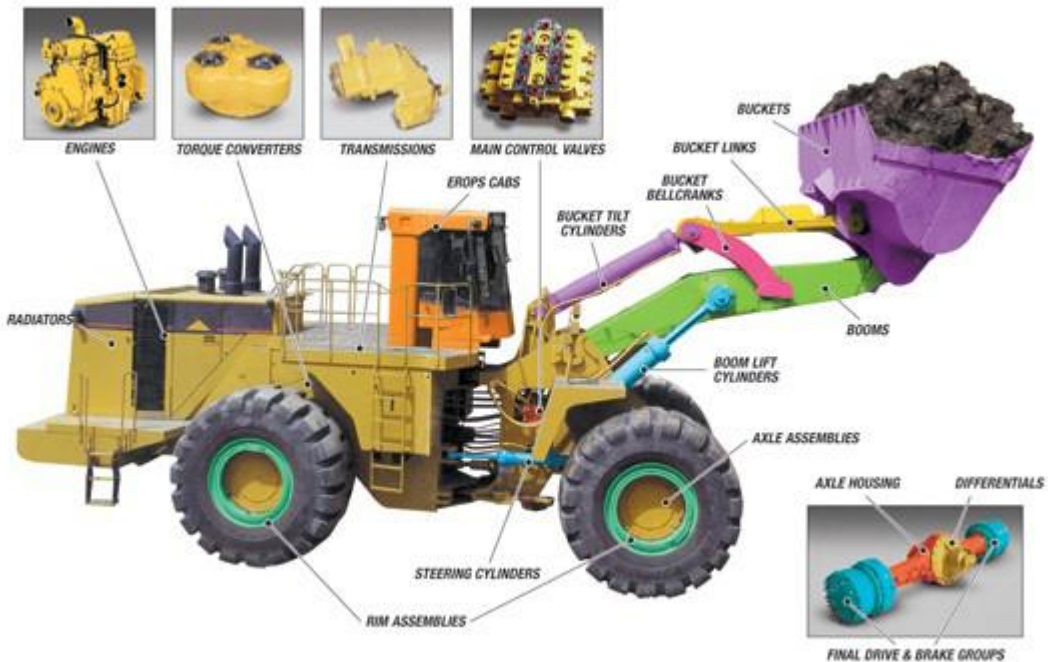
blade



crawler tractor

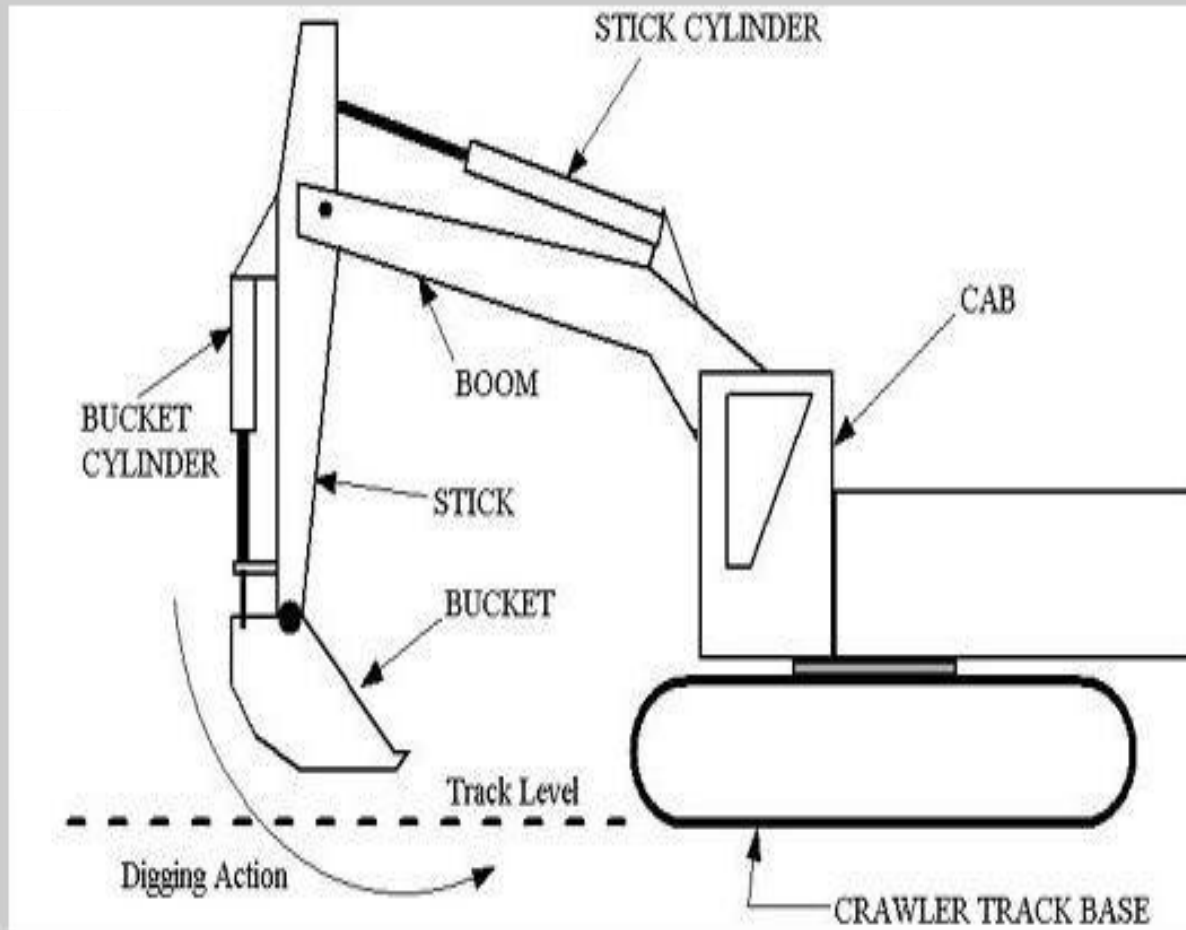


ripper



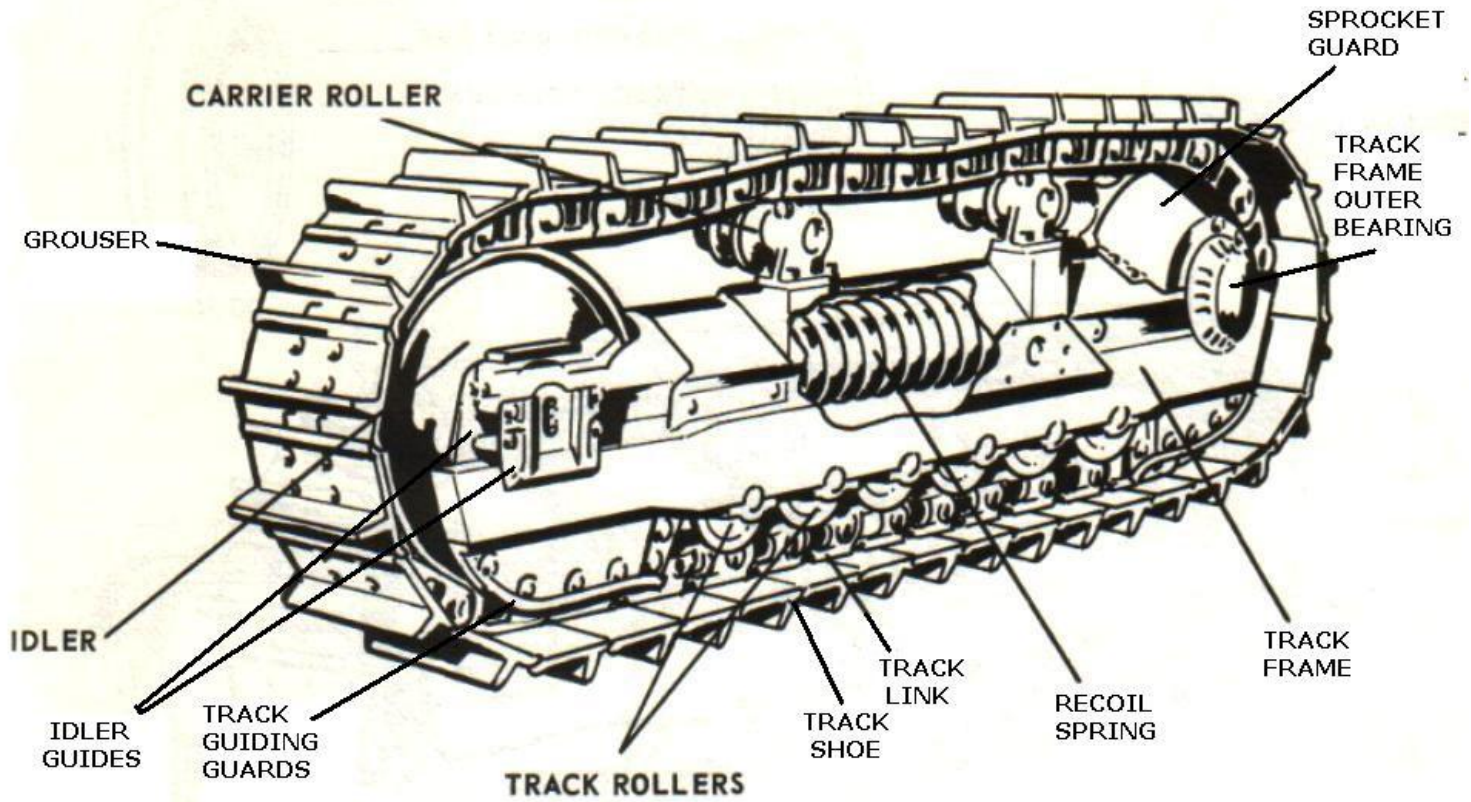


Excavator Nomenclature





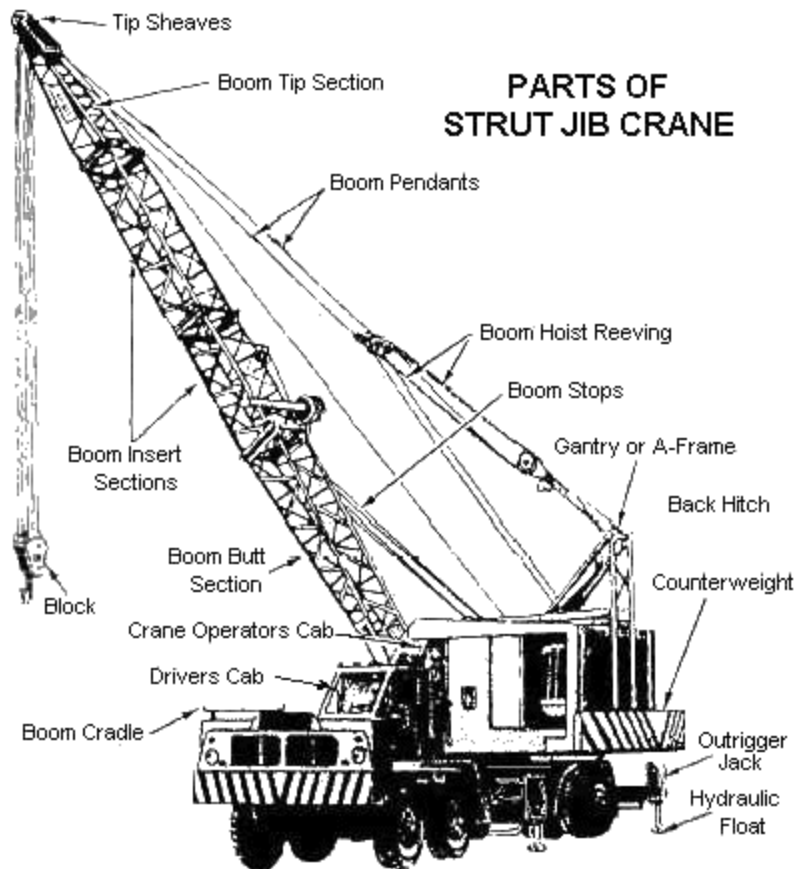
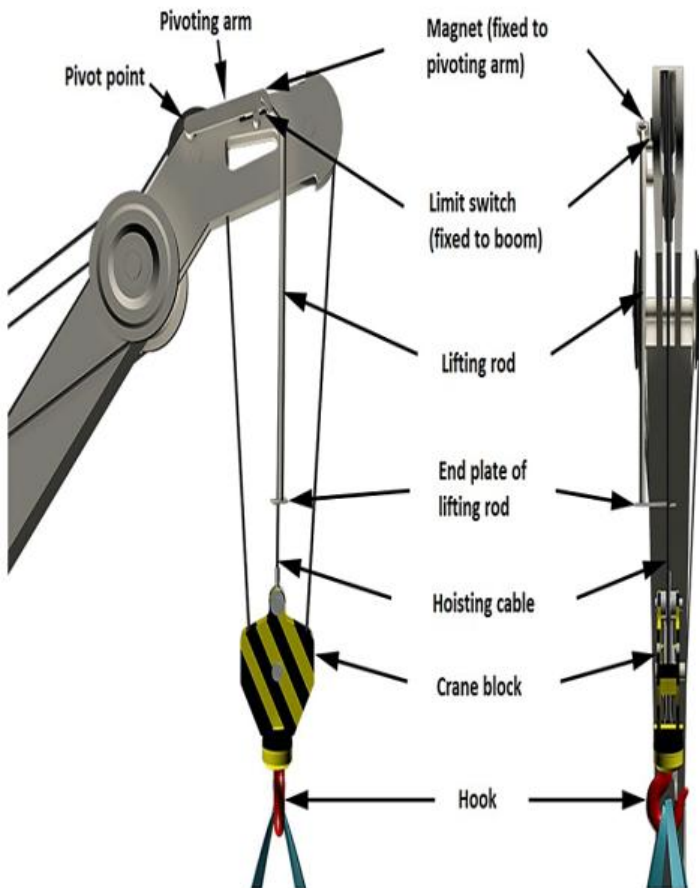
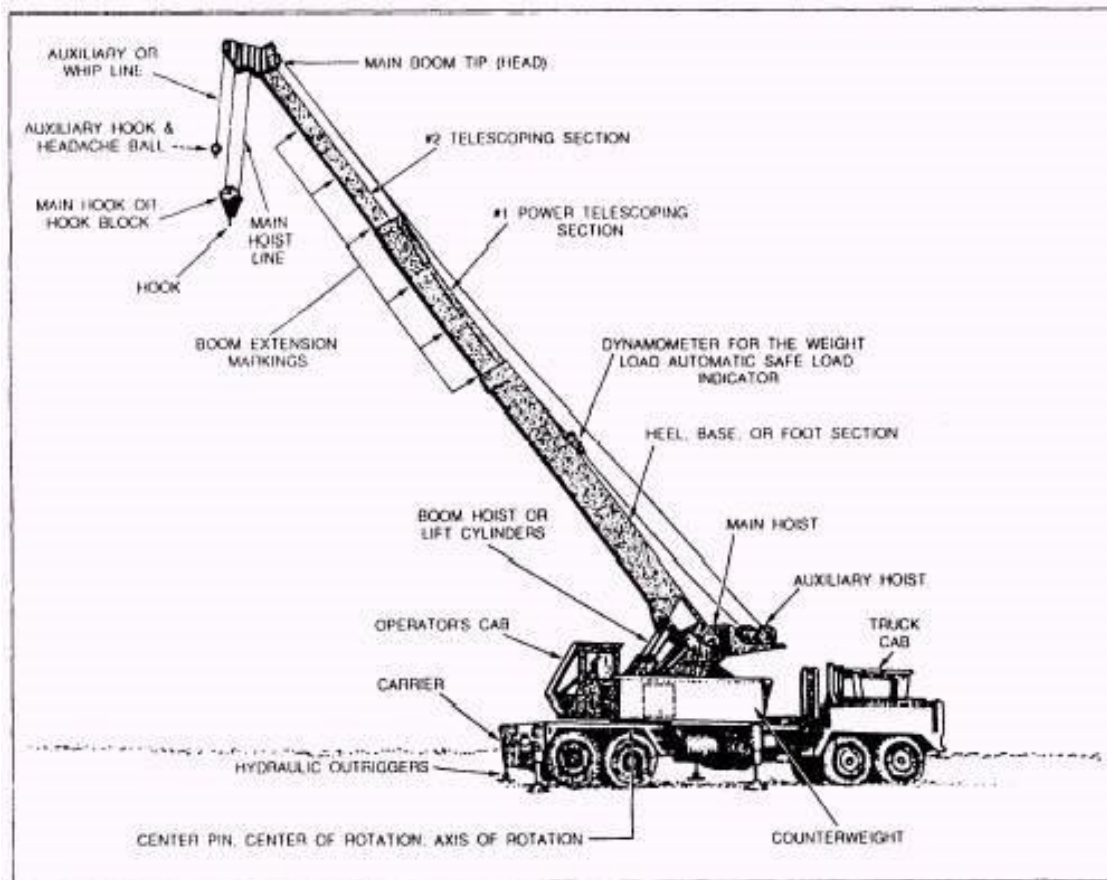
Specialized **Claims** Solutions
Excavator Nomenclature





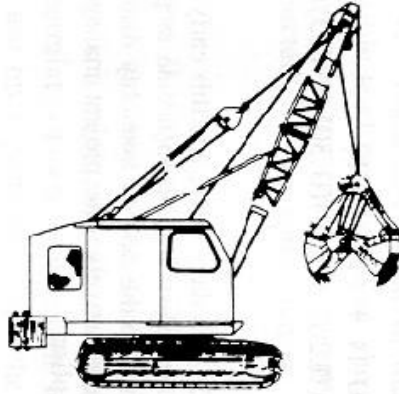
Specialized Claims Solutions

Crane Nomenclature

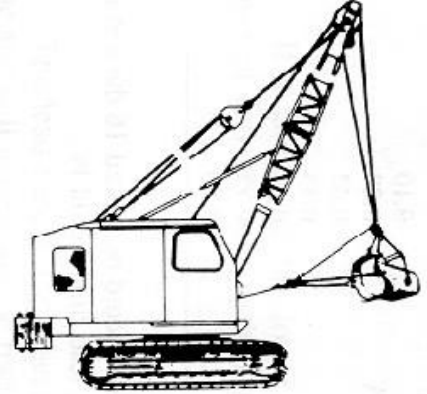




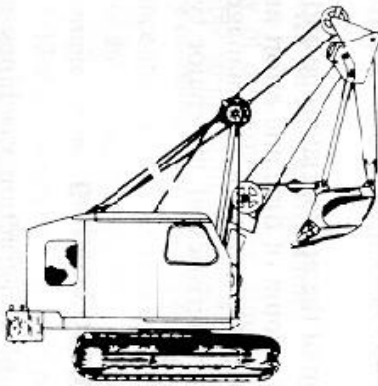
CRANE (HOOK)



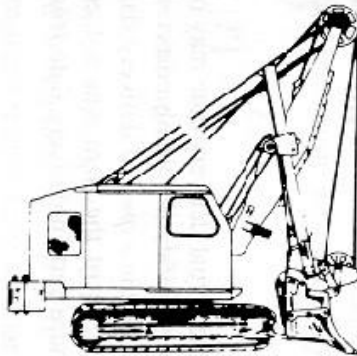
CLAMSHELL



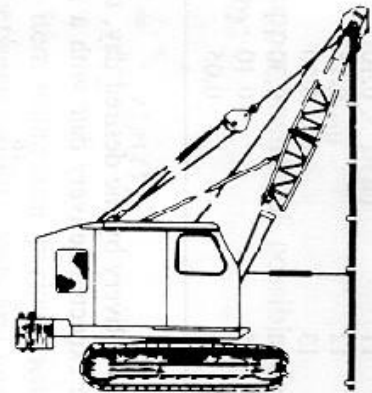
DRAGLINE



BACK HOE



SHOVEL



PILEDRIVER



Aerial Man lift



All Terrain



Boom Truck



Bucket-sign Crane



Carry Deck Industria



Crawler Lattice Boom



Crawler Telescopic Boom



Digger Derrick



Down Cab Rough Terrain



Drywall Pallet Fork Material Crane



Knuckle Boom Articulating



Marine Crane



Material Handler



Mini Crane



Overhead Bridge Crane



Service Truck With Crane



Telehandler Forklift



Tower Crane



Truck Mounted Lattice Boom



Truck Mounted Telescopic Boom



Construction Elevator Hoist



Ganty Crane

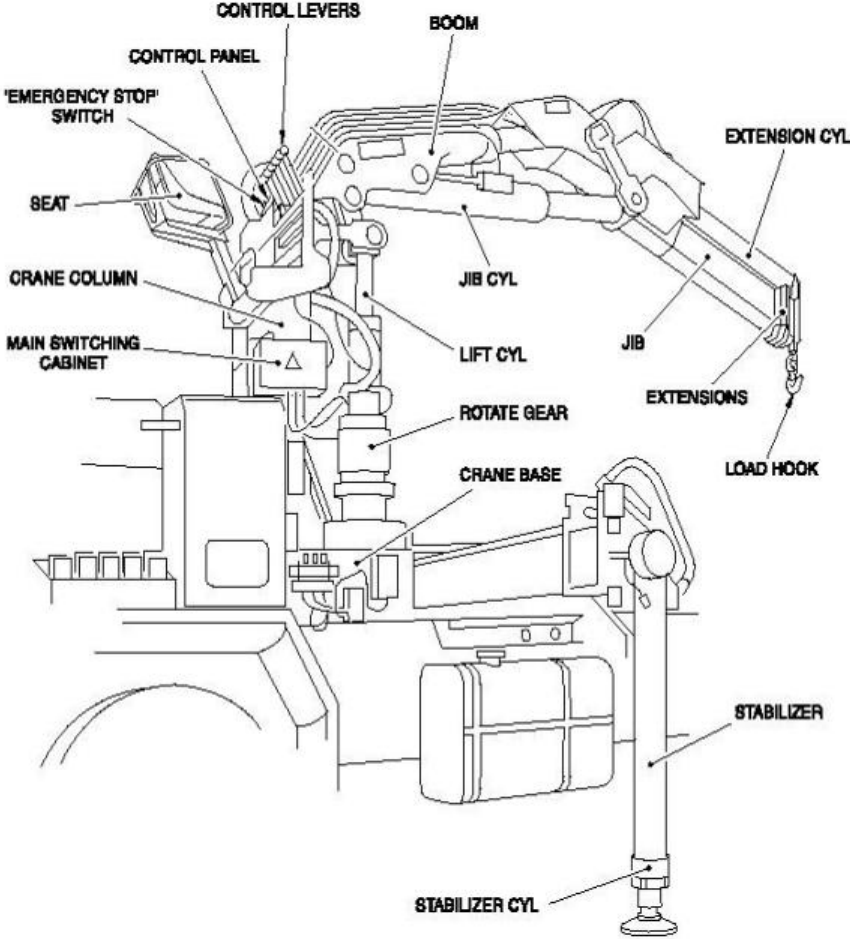


Rough Terrain

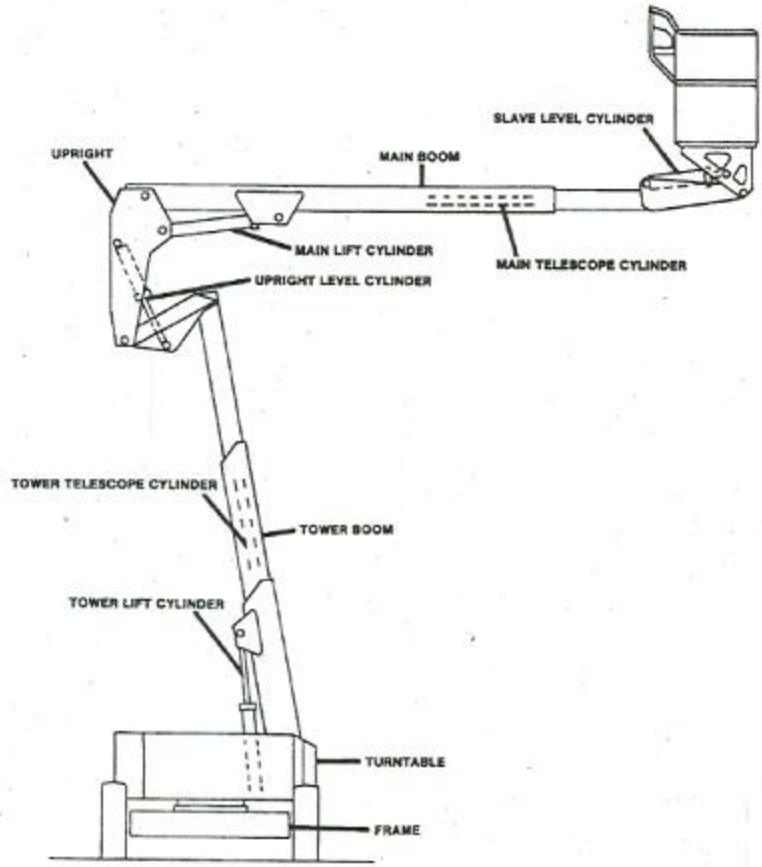


Specialized **Claims** Solutions

Crane Nomenclature



WF0000





Specialized **Claims** Solutions

Heavy Equipment



forklift



concrete mixer



fire truck



dump truck



plowing truck



towing truck



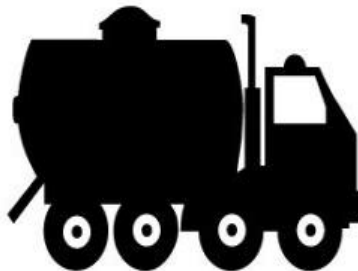
hydraulic excavator



crane



road roller



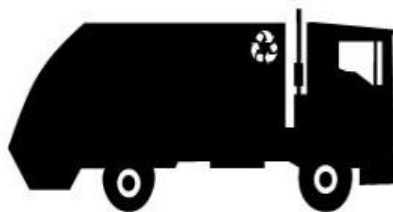
tank truck



tractor



wheel loader



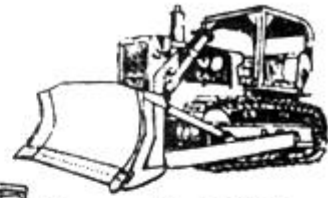
garbage truck



demolition truck



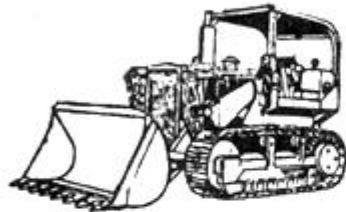
a) WHEEL LOADER



b) BULLDOZER



c) BACKHOE



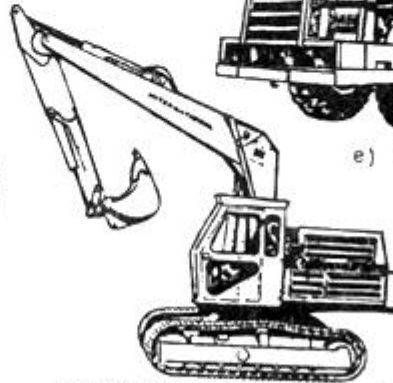
d) CRAWLER LOADER



e) MOTOR GRADER



f) LOGGING EQUIPMENT



g) HYDRAULIC EXCAVATOR



h) HAUL TRUCK

SITE EQUIPMENT



CAT
Articulated Trucks
(3)



CAT
Backhoes
(6)



CAT
Dirt Rollers
(6)



CAT
Asphalt Rollers
(4)



CAT
Trench Rollers
(5)



CAT Excavators
(17)



CAT Paver
(1)



CAT Skid Steer Loaders
(2)



CAT Dozers
(8)



CAT Wheel Loaders
(4)



Road Tractors
(6)



Trailers
(Flatbeds, Lowboy, Drop Deck, Tags, Dump, Van, Office)
(50)



Tandem Dump Trucks
(3)

TRENCHLESS EQUIPMENT



American Auger
Horizontal Directional Drill
DD-1100
(1)



American Auger
Horizontal Directional Drill
DD-440T
(1)



American Auger
Horizontal Directional Drill
DD-140
(1)



Vermeer
Horizontal
Directional Drill
(1)



American Auger
Horizontal Boring Machine
72-1200
(1)



American Auger
Horizontal Boring Machine
36-600
(1)



Tulsa Rig Iron
Recycling System
MCS-750
(3)



Ellis Williams
Mud Pump
E447, E446
(3)

**SEMI HAULING
TRANSFER TRAILERS**



ROLL-OF TRUCKS



WATER TRUCKS



FRONT LOADERS



EXCAVATORS



BOBTAIL DUMP TRUCKS



WHEEL LOADERS



END DUMPS



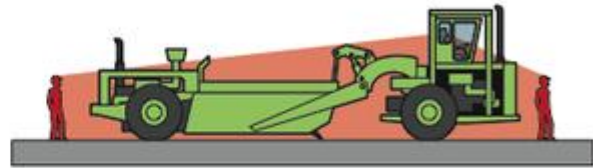
SKID STEER LOADERS



Fig. 15:
Mobile plant
operator
blind spots



Dump truck



Tractor scraper



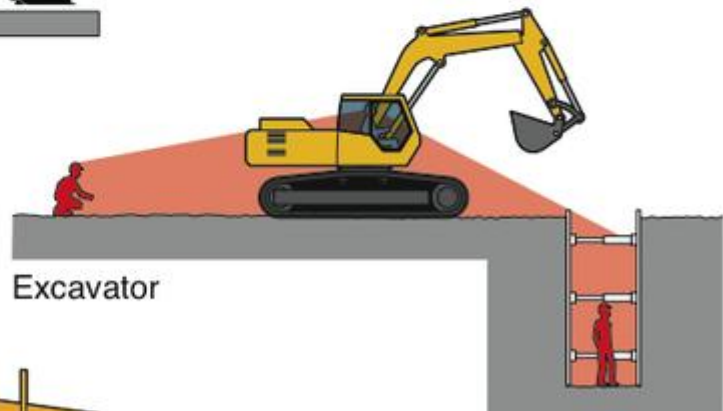
Bulldozer



Articulated roller



Articulated loader

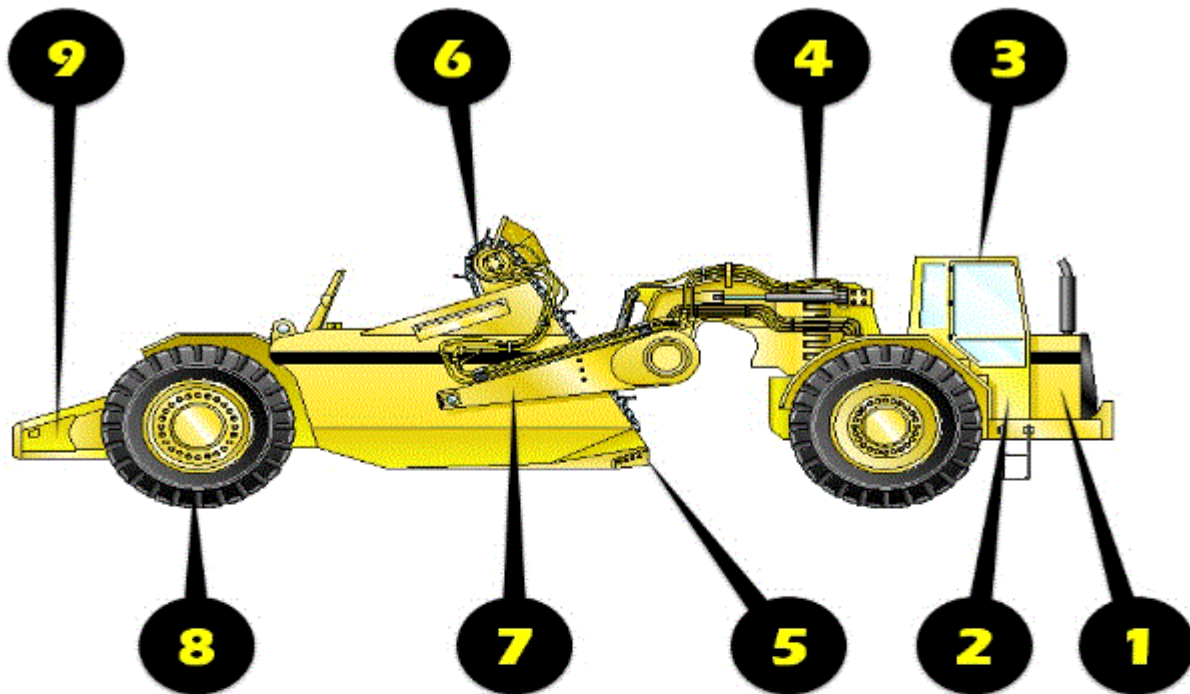


Excavator



Grader

Bull Dozer



1. Engine: Inspect both engine fluid levels and note condition of each type of fluid. Note any visible oil or coolant leaks. Examine exhaust systems and air intake system for leaks and damage. Check condition of radiator and front grille; examine bumper and ripper for damage.

2. Battery: Inspect battery compartment for corrosion and rust. Make sure batteries are in good condition and the right size are properly fitted. Check any sight glasses or dipsticks in this area. Make sure fuel tank and hydraulic fluid tank are in good condition and leak free.

3. Cab: Examine cab interior for overall condition, including all switches, controls, and seat. Make sure all safety systems are present and working. Cab and instrument glass should be unbroken. Confirm all gauge functionality and activity. No drill holes or integrity issues should be seen in ROPS. While in cab, engage pan in ground and watch linkage for extra play.

4. Articulation: Inspect gooseneck and articulation joints for excessive wear, damage, and play. All hydraulic cylinders should appear dry and in good condition with no pitting, discoloration, and no extra play in their range of motion. Examine all visible rod sections for damage. Make sure all hydraulic lines and connections are in good condition, with no leaks or seepage. Also note any weld repairs or repair plates on the neck or draft arms.

5. Cutting Edge: Closely inspect cutting edge, pan, and bowl for damage, any missing bolts, and general appearance.

6. Chain: Inspect the chain carefully for any broken links, missing pins, or damaged sections. Make sure the elevator rollers turn freely. Inspect the bowl lift cylinders for any leaks, and check for any damage and overall condition. Also inspect the flights for any damage and if regrounding is necessary. Check for any cracks in factory welds, missing bolts from mounting brackets, and check all chain brackets for any damage and overall condition.

7. Speed Reducer: Inspect speed reducer for hydraulic leaks, damage, and overall condition. Carefully check factory welds for cracks on both sides of the scraper.

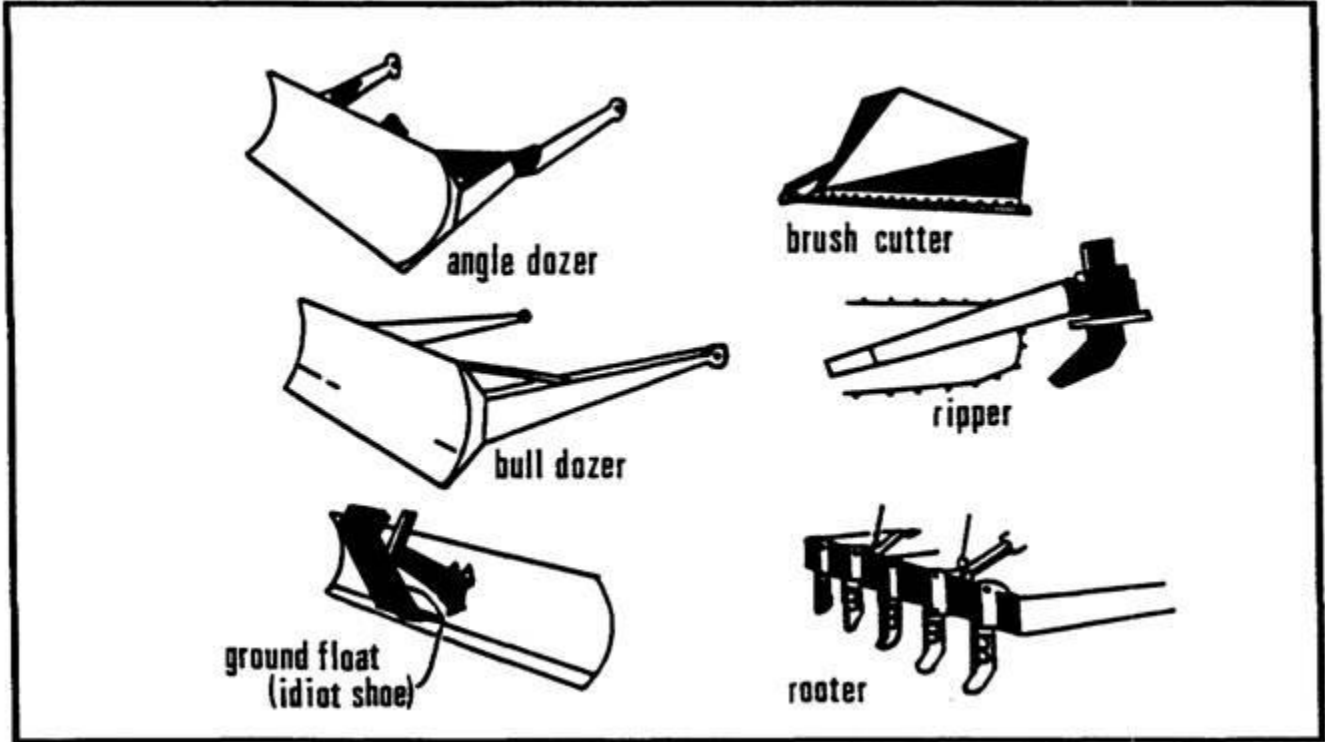
8. Tires: Inspect all tires for tread depth, and note any cracks, damage, or dry rot especially on sidewalls. Inspect brake system appearance for leaks, and overall appearance of rotors, drums, pads, and linings.

9. Stinger Structure: Inspect the stinger structure extending out from the bowl, for excessive push, pull, and any damage. Carefully inspect all factory welds in this area for cracks, breaks, and signs of overstressing.



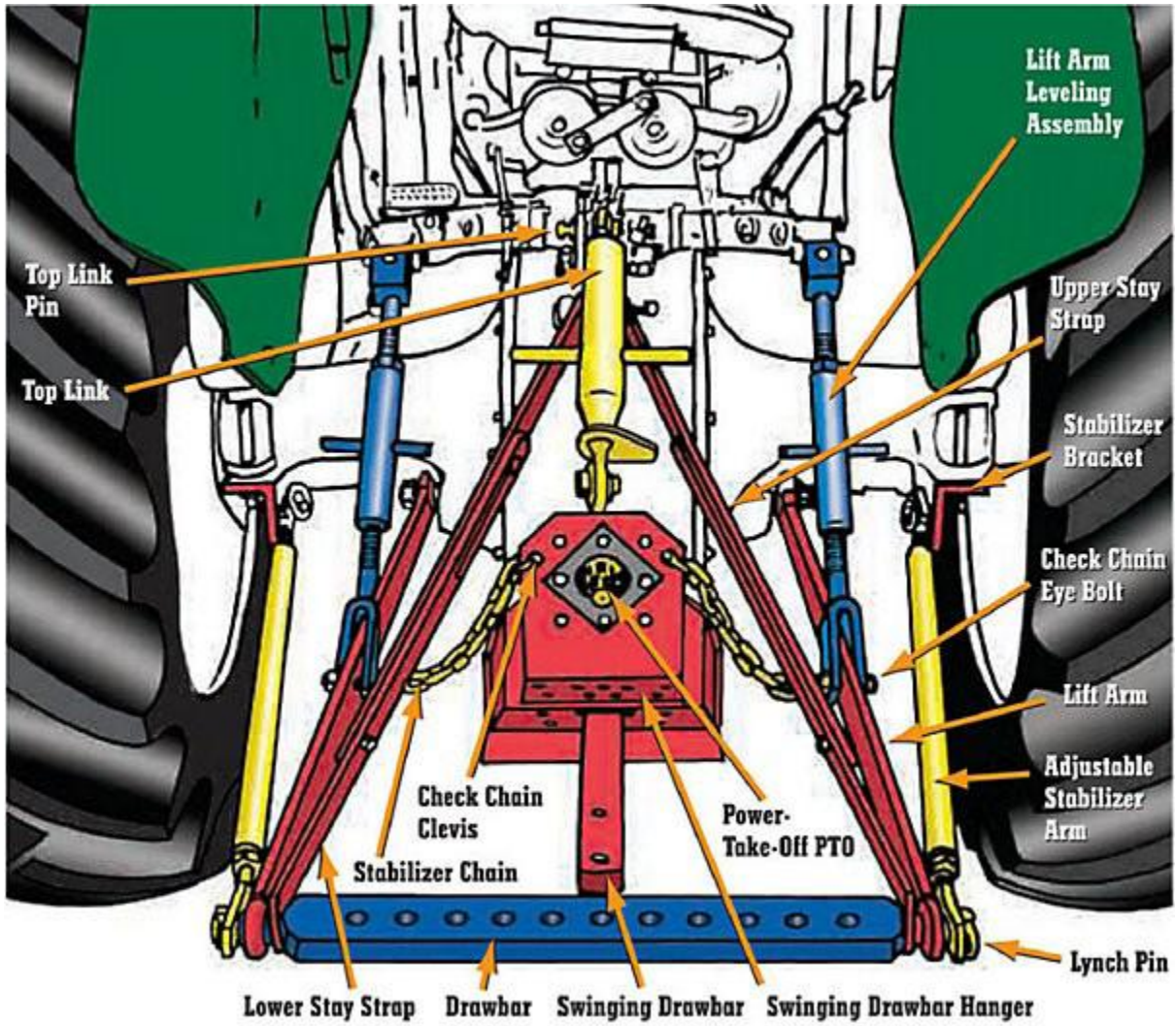
Specialized **Claims** Solutions

Tractor Attachments





Tractor Nomenclature





Tractor Nomenclature

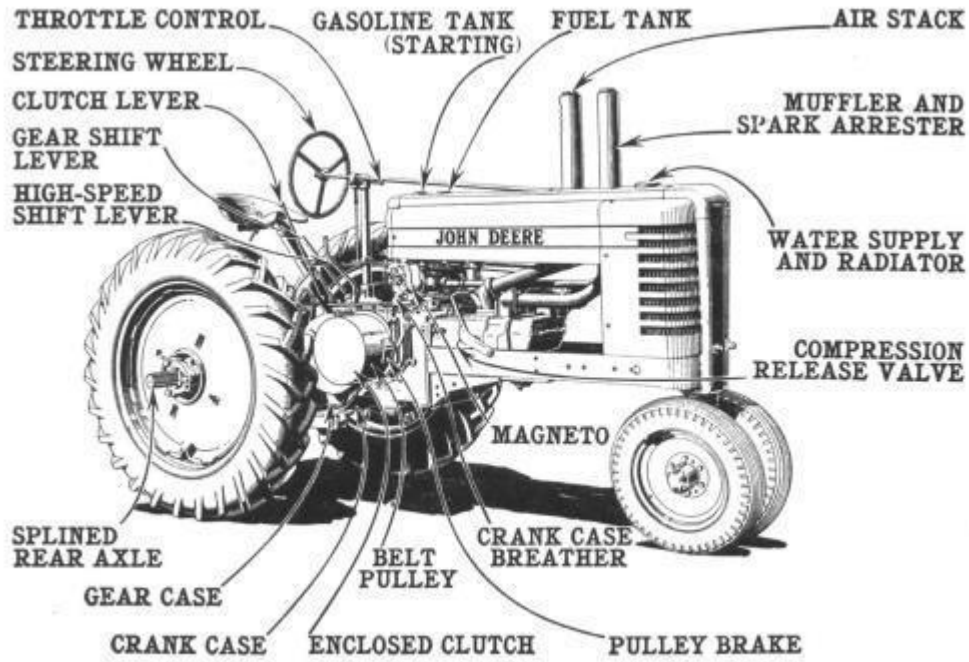


Figure 208—Adjustable tread general-purpose tractor.



Cross Shaft



Ball Pin



Rod Joint



Pipe



Steering Knuckle



Lower Link (L)



Lower Link (R)



Pull Rod



Arm



Rod Joint



Pull Rod



Candan Shaft



Silencer



Hook



Universal Joint



Shaft



Pull Rod



Lift Arm (L)



Lift Arm (R)



Steering Pull Rod



Nut



Pull Rod



Fork



Arm



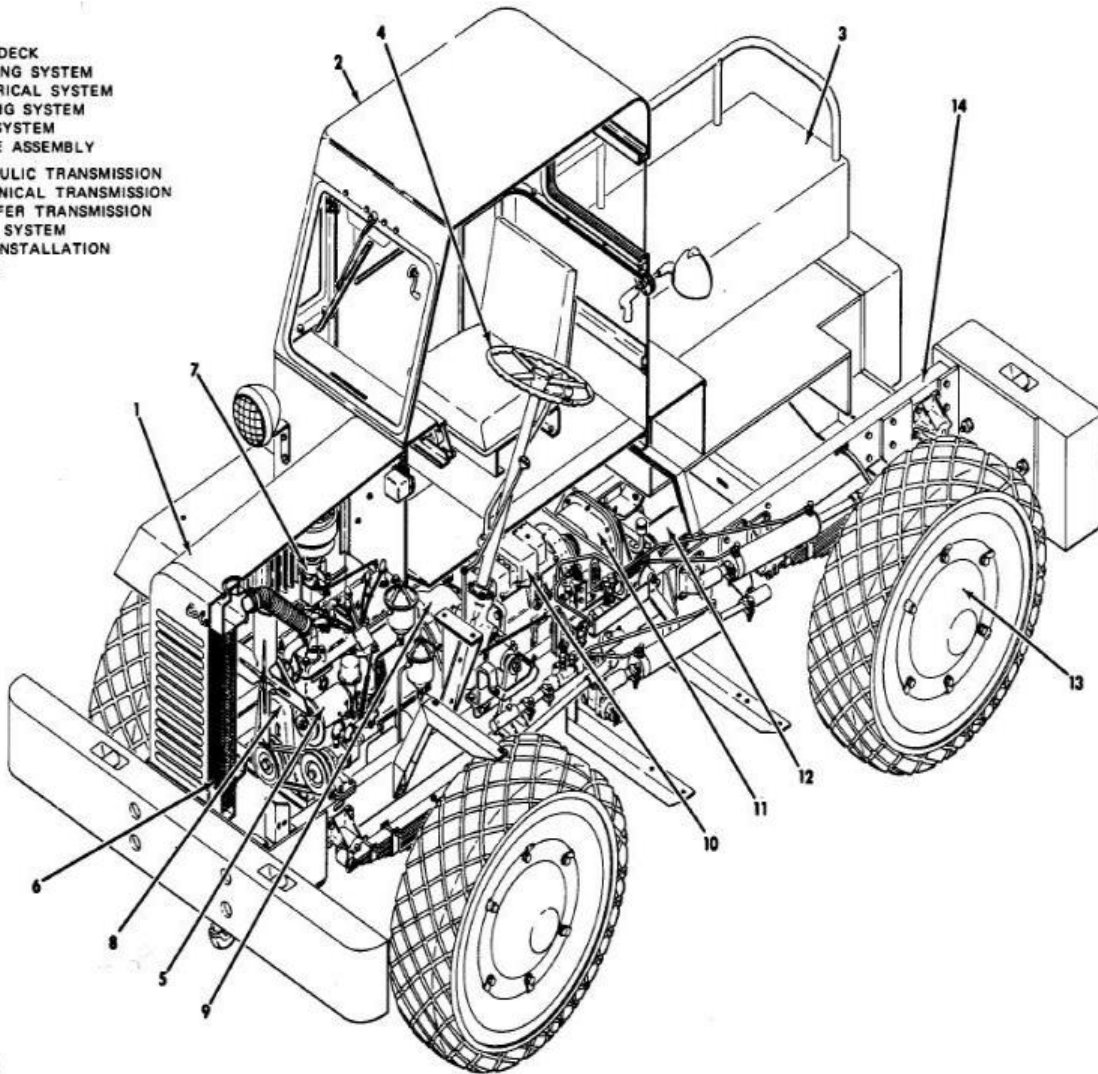


Tractor Nomenclature



Tractor Nomenclature

1. HOOD
2. CAB
3. REAR DECK
4. STEERING SYSTEM
5. ELECTRICAL SYSTEM
6. COOLING SYSTEM
7. FUEL SYSTEM
8. ENGINE ASSEMBLY
9. HYDRAULIC TRANSMISSION
10. MECHANICAL TRANSMISSION
11. TRANSFER TRANSMISSION
12. BRAKE SYSTEM
13. AXLE INSTALLATION
14. FRAME



AV 008851

Figure 1-2. Tractor component description



Tractor Nomenclature

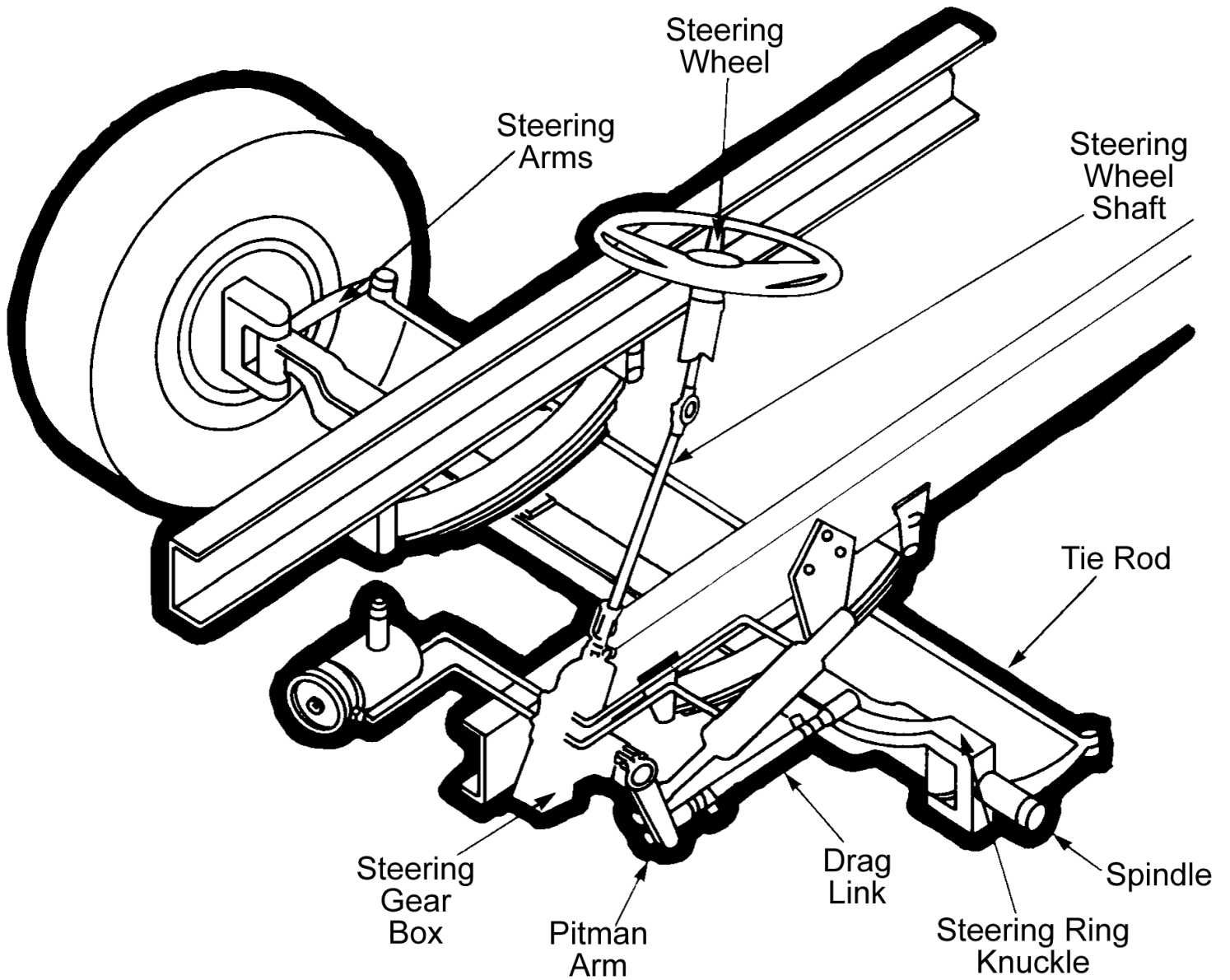


Figure 2-1

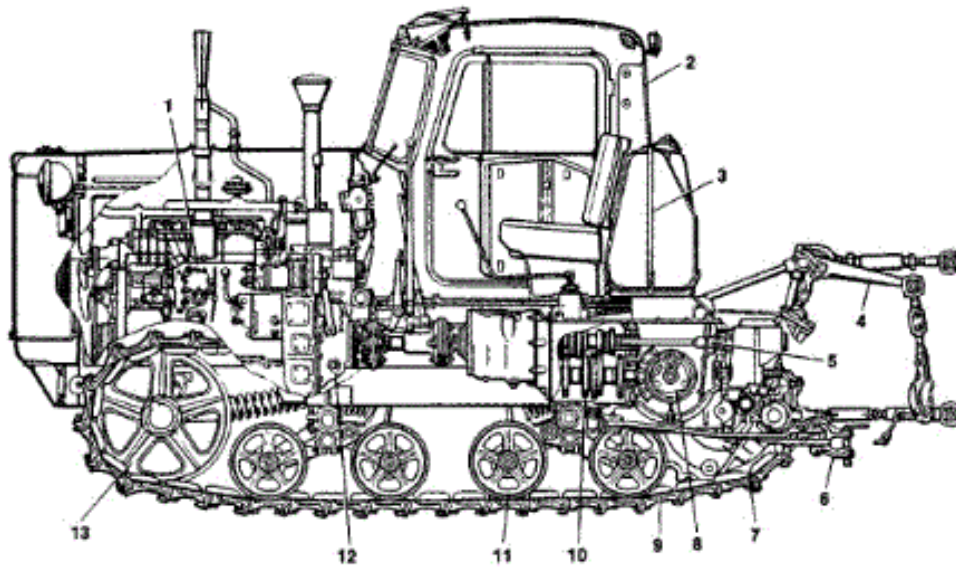


Figure 2. Crawler tractor: (1) engine, (2) cab, (3) fuel tank, (4) levers of tool-bar assembly, (5) power takeoff shaft, (6) hitch, (7) driving sprocket, (8) main drive, (9) crawler track, (10) gear box, (11) bogie wheel, (12) clutch, (13) Idler wheel

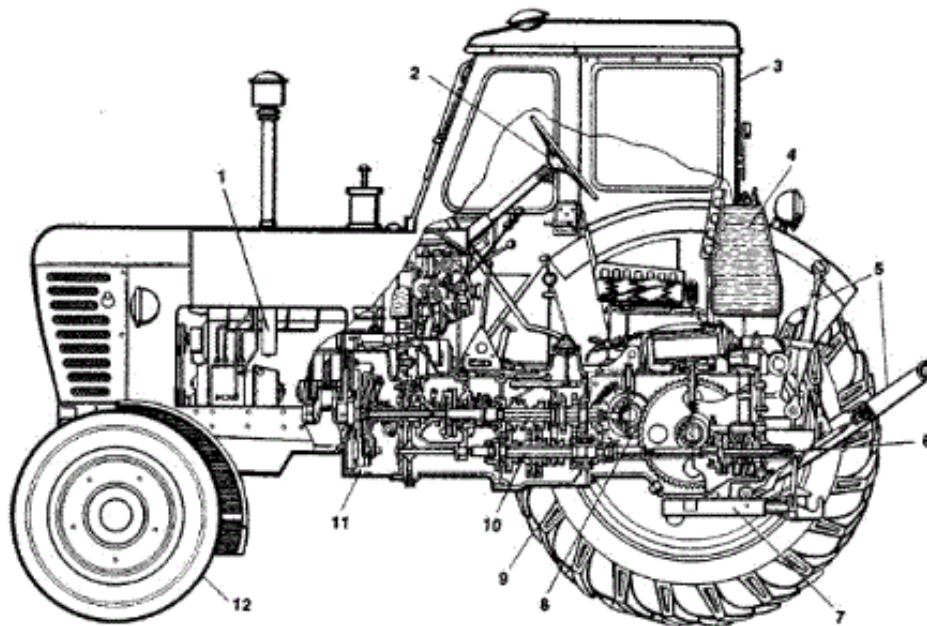


Figure 1. Wheel-type tractor: (1) engine, (2) steering wheel, (3) cab, (4) fuel tank, (5) levers of toolbar assembly, (6) power takeoff shaft, (7) hitch, (8) main drive, (9) driving wheel, (10) gear box, (11) clutch, (12) front (steerable) wheel

Farming Attachments



1001



1002



1003



1004



1005



1006



1007



1008



1009

Farming Attachments



corn drill



harrow



disk plough



holeborer



ridger



harvester



trailer



mower



grader



thresher



raker



broadcaster



potato harvester

















potato planter

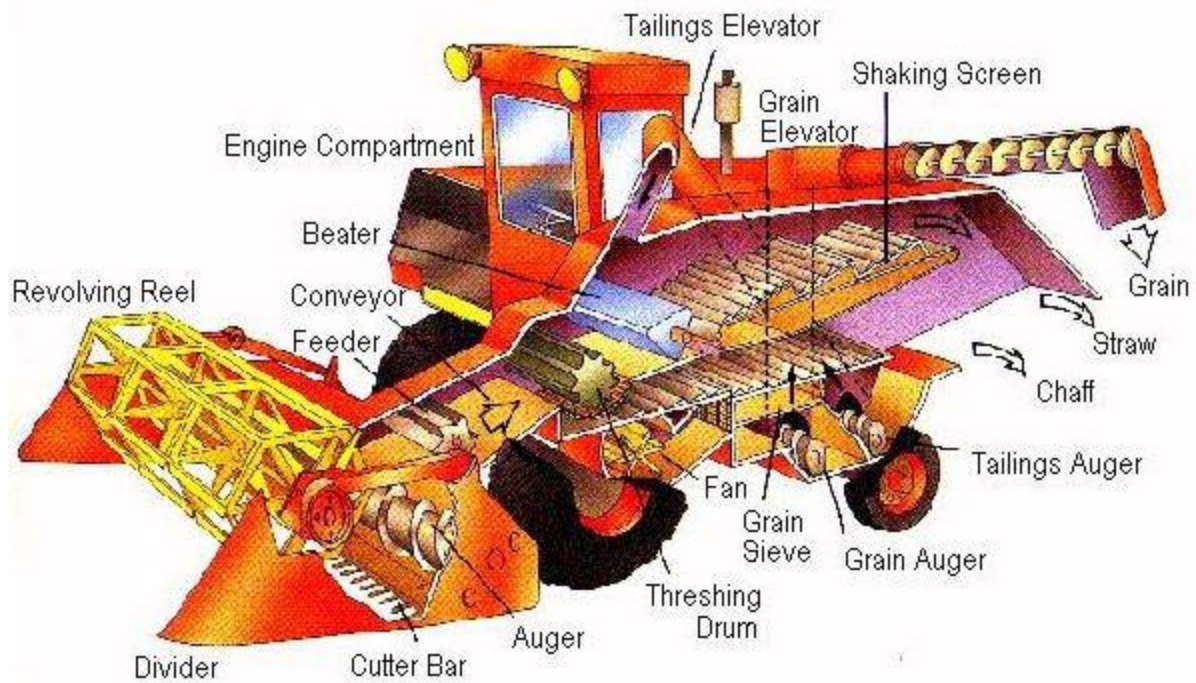
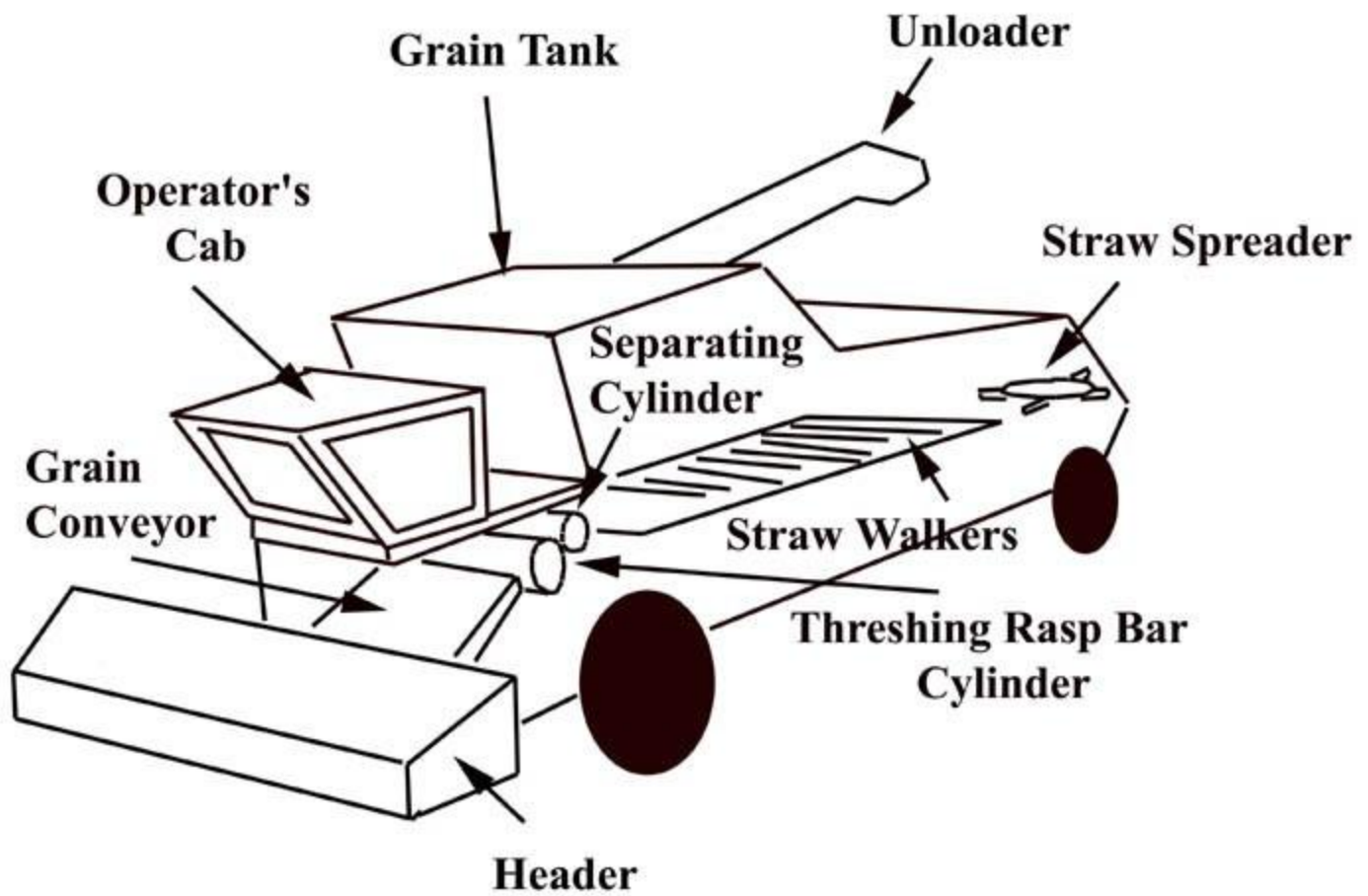


rotovator

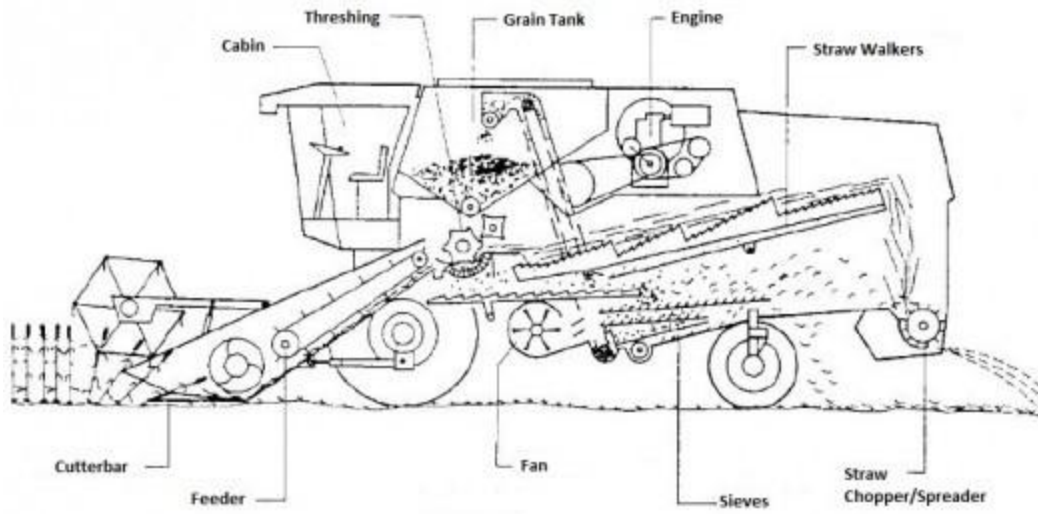
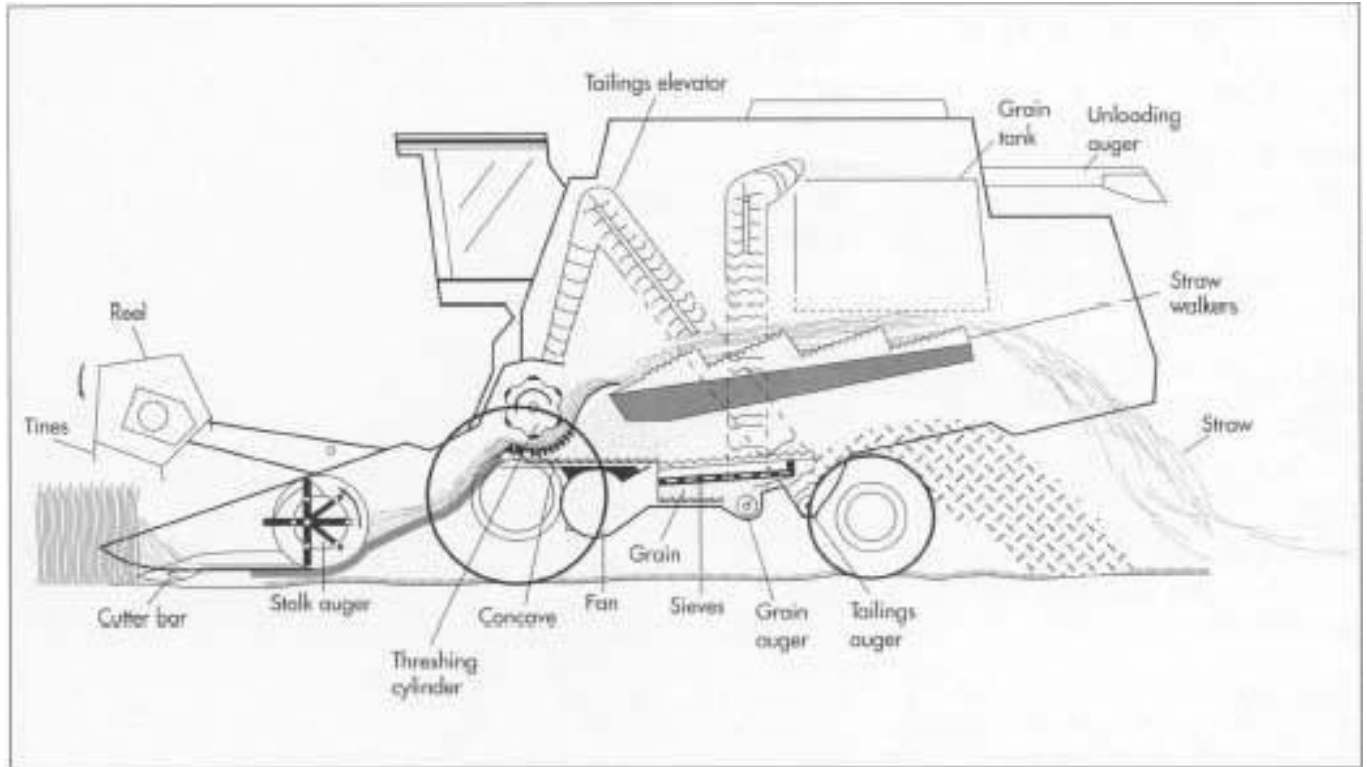
Farming Mechanical Equipment

Category	Product	Description	Players	Price	Category	Product	Description	Players	Price		
Tractors	Compact Utility Tractor		- Small tractor designed for landscaping and estate management - generally <40 HP	Deere, AGCO, CNH, Kubota, Claas, Mahindra, Deutz-Fahr	<\$20k	Hay & Forage	Forage Harvester		- Harvests plants to make silage for livestock feed	Deere, AGCO, CNH, Claas	\$200-400k
Tractors	Utility Tractor		- Common on livestock farms, not commonly used to grow crops - 40-100 HP	Deere, AGCO, CNH, Kubota, Claas, Mahindra, Deutz-Fahr	\$15-50k	Hay & Forage	Windrower		- Cuts hay and small grain crops, forms rows with the cut crop	Deere, AGCO, CNH, Claas	\$100-125k
Tractors	Row-Crop Tractor		- Designed for growing / cultivating row crops - 140-360 HP	Deere, AGCO, CNH, Kubota, Claas, Deutz-Fahr	\$100-300k	Hay & Forage	Baler		- Compresses cut crop into compact bales for easy transport and storage	Deere, AGCO, CNH, Claas, Deutz-Fahr	\$15-40k
Tractors	Four-Wheel-Drive Tractor		- Large, high horsepower tractors for the most demanding tasks on large farms - 360-560 HP	Deere, AGCO, CNH, Claas	\$225-400k	Hay & Forage	Mower		- Cuts and also allows for crimping and crushing of newly cut hay for faster drying	Deere, AGCO, CNH, Claas, Deutz-Fahr	up to \$40k
Harvesting	Combine		- Machine that cuts and threshes grain crops	Deere, AGCO, CNH, Claas, Deutz-Fahr	\$275-475k	Crop Care	Planters and Seeders		- Includes planters, drills, air seeders	Deere, AGCO, CNH, Claas	up to \$200k
Harvesting	Cotton Stripper		- Strips the entire plant of both open and unopened bolls	Deere, AGCO, CNH	\$175-200k	Crop Care	Tillage		- Includes plows, disks, rippers	Deere, AGCO, CNH, Claas, Deutz-Fahr	up to \$100k
Harvesting	Cotton Picker		- Removes the seed cotton from the plant and builds bales	Deere, AGCO, CNH	\$400-700k	Crop Care	Self-Propelled Sprayer		- Sprays pesticides, herbicides, fungicides for quality control	Deere, AGCO, CNH	\$150k-350k

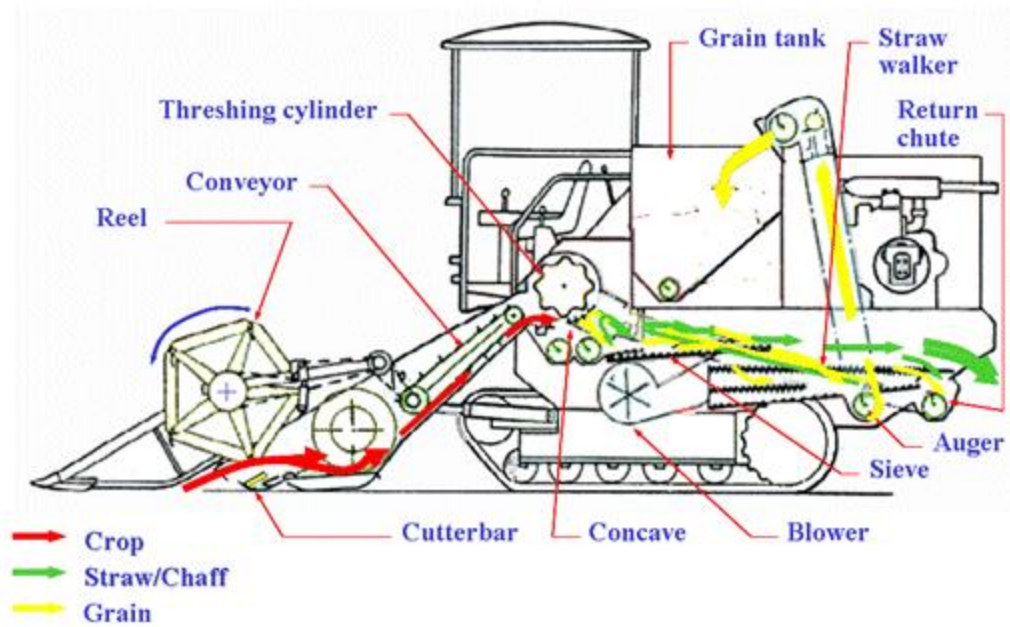
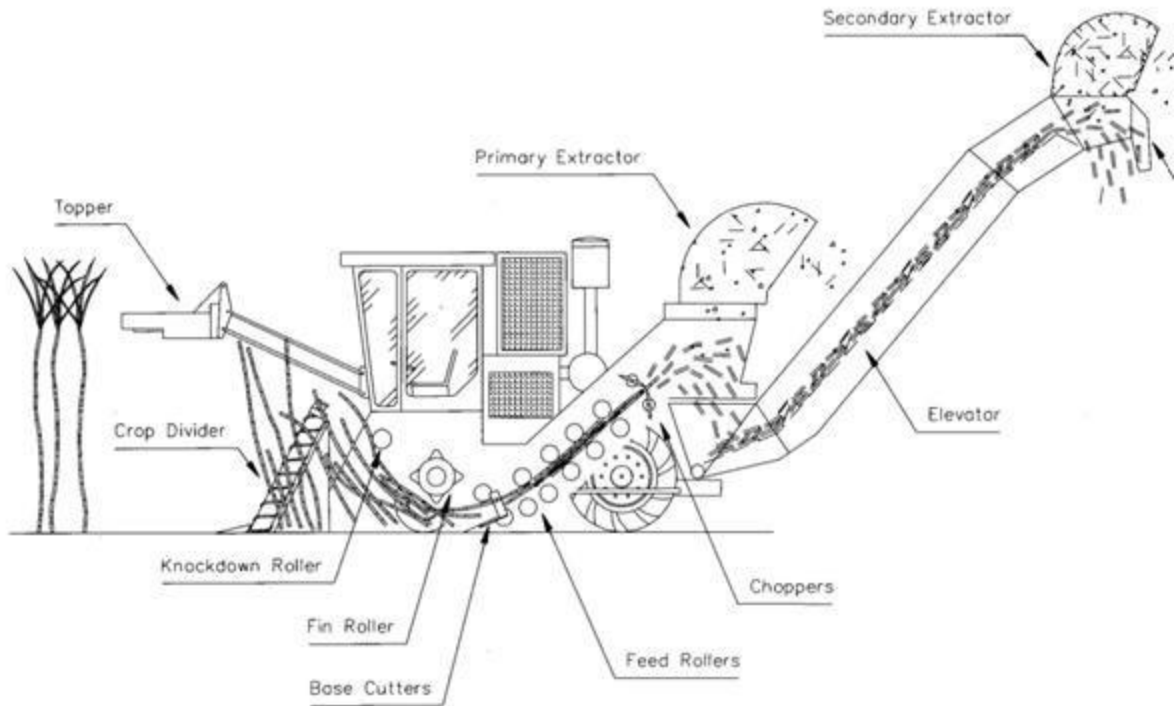
Farming Combines

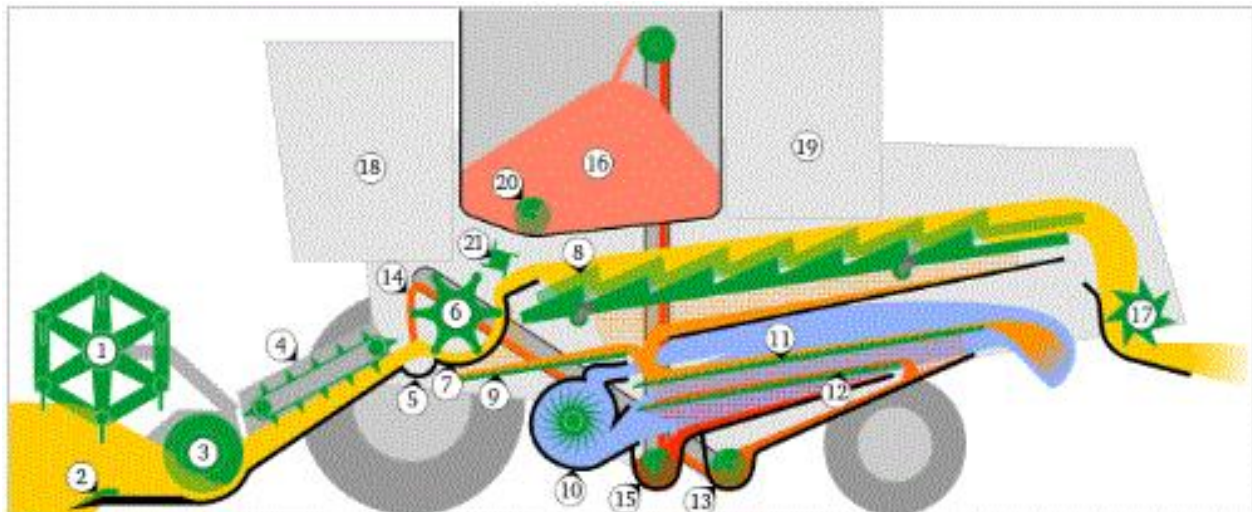


Farming Combines



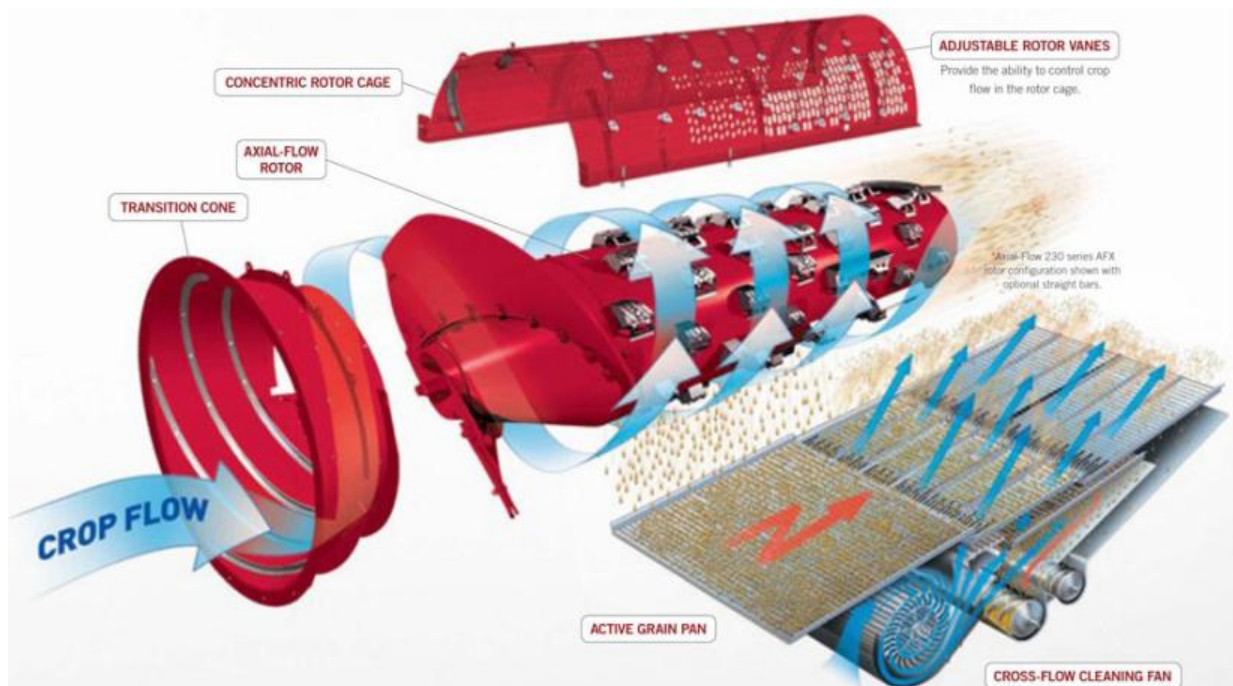
Farming Combines



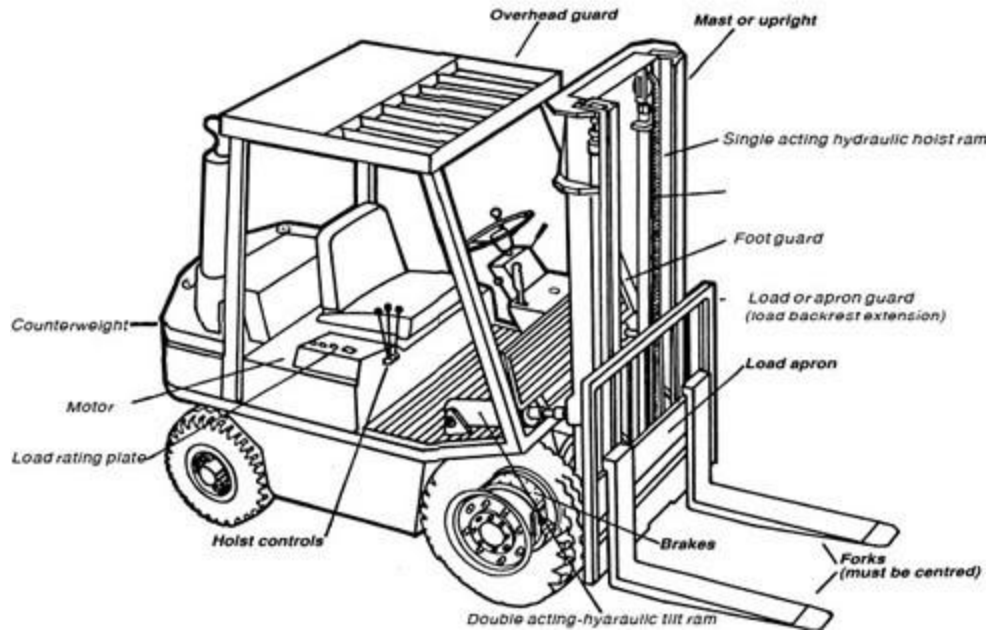


Conventional combine harvester (cut)

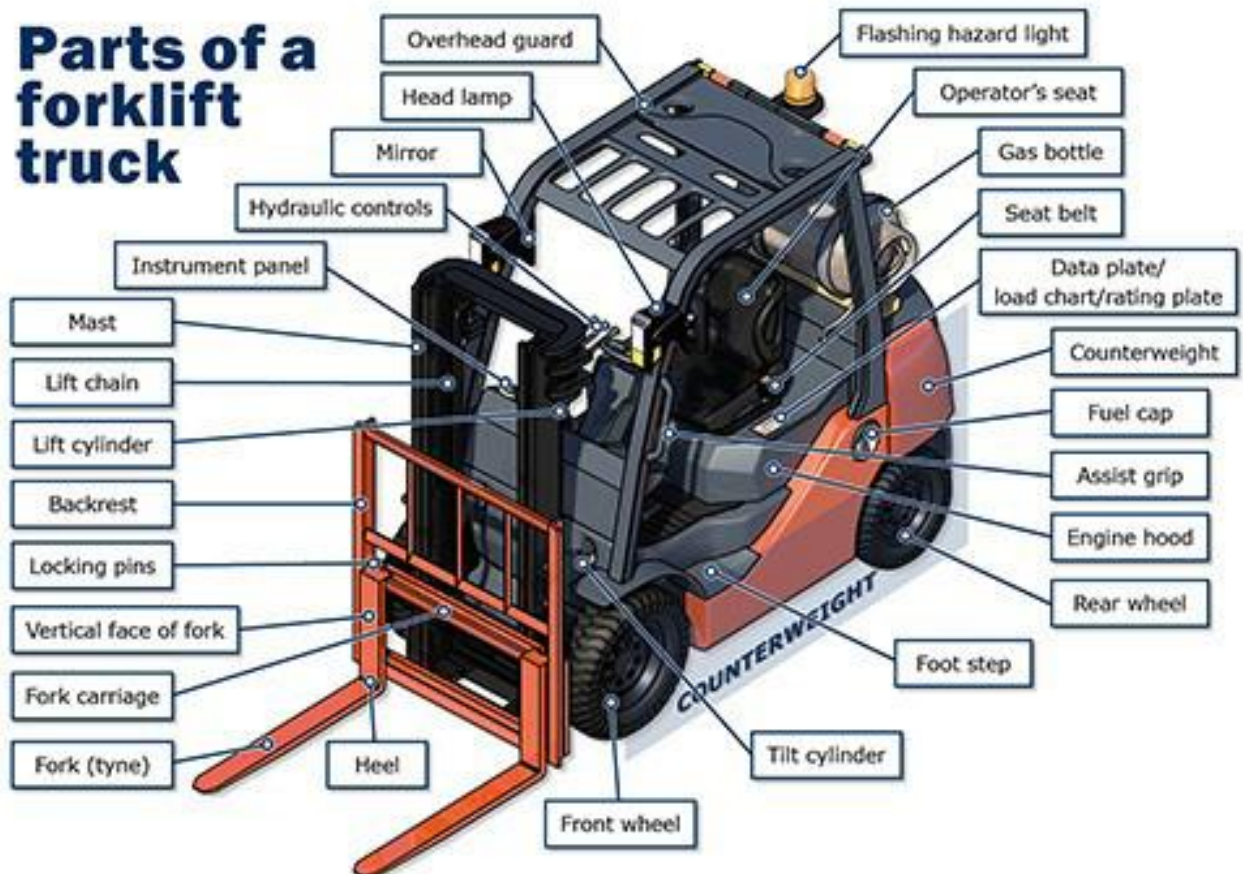
- | | |
|-------------------|-----------------------------|
| 1) Reel | 11) Top Adjustable sieve |
| 2) Cutter bar | 12) Bottom sieve |
| 3) Header auger | 13) Tailings conveyor |
| 4) Grain conveyor | 14) Rethreshing of tailings |
| 5) Stone trap | 15) Grain auger |
| 6) Threshing drum | 16) Grain tank |
| 7) Concave | 17) Straw chopper |
| 8) Straw walker | 18) Driver's cab |
| 9) Grain pan | 19) Engine |
| 10) Fan | 20) Unloading auger |
| | 21) Impeller |



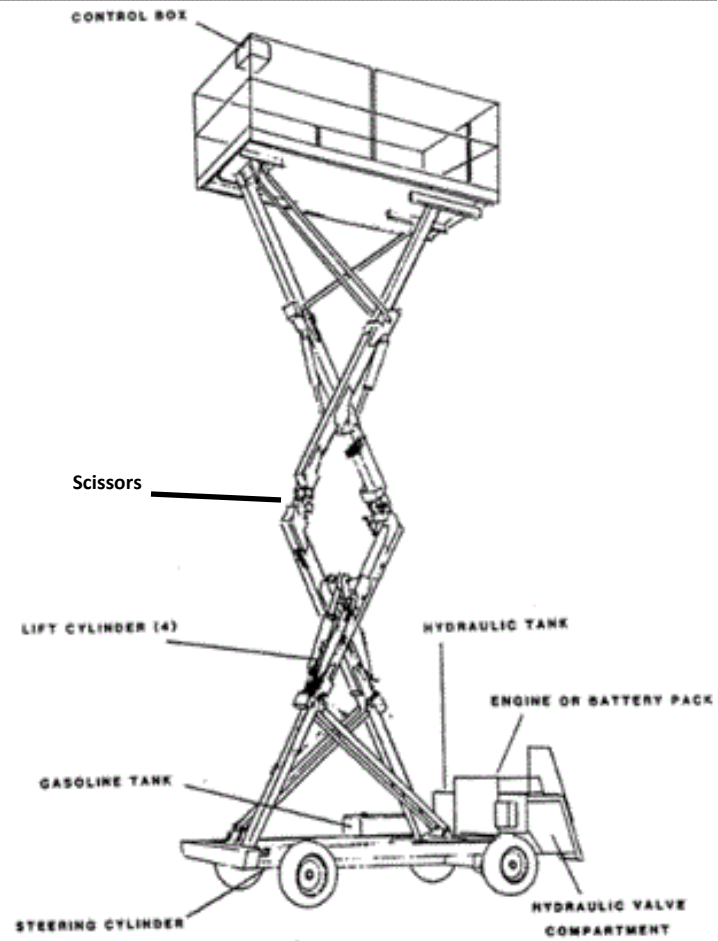
Forklift Nomenclature



Parts of a forklift truck

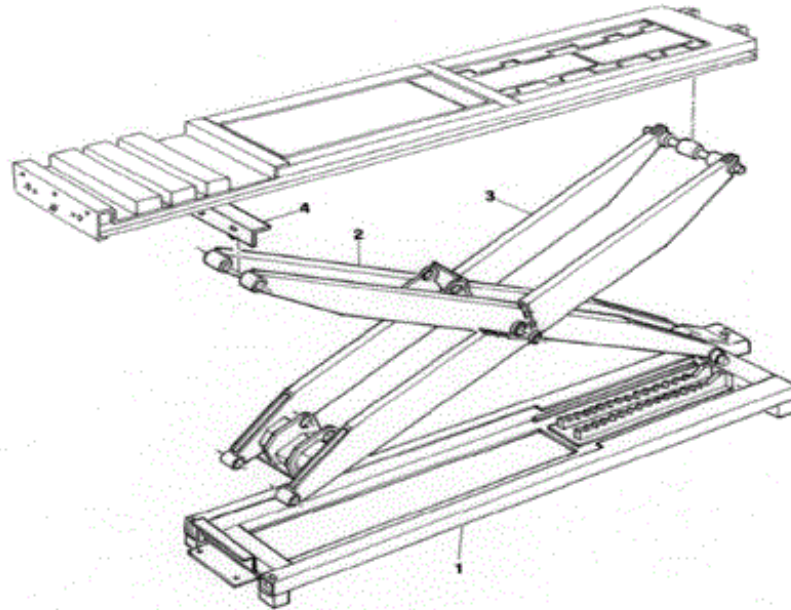


Scissor Lift Nomenclature

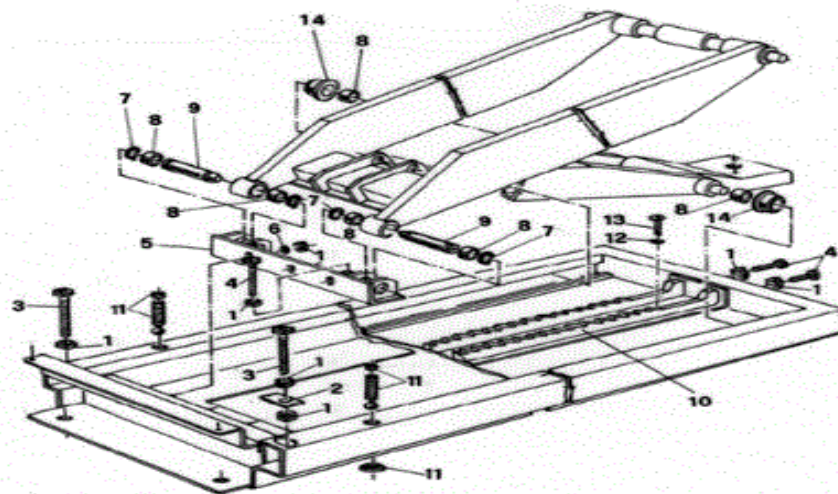


Scissor Lift Nomenclature

1.2 Scissors

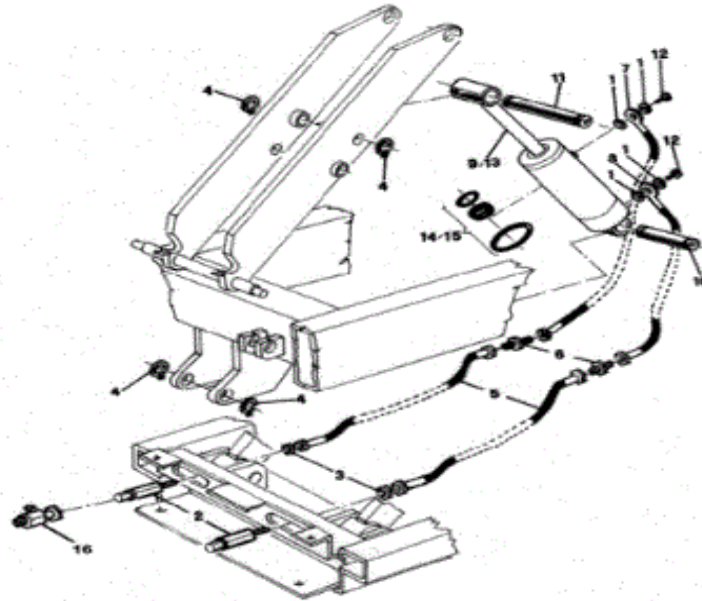


Item	Part	Description
1		BASE FRAME
2		INTERNAL ARM
3		EXTERNAL ARM
4		UPPER ARM CONNECTION



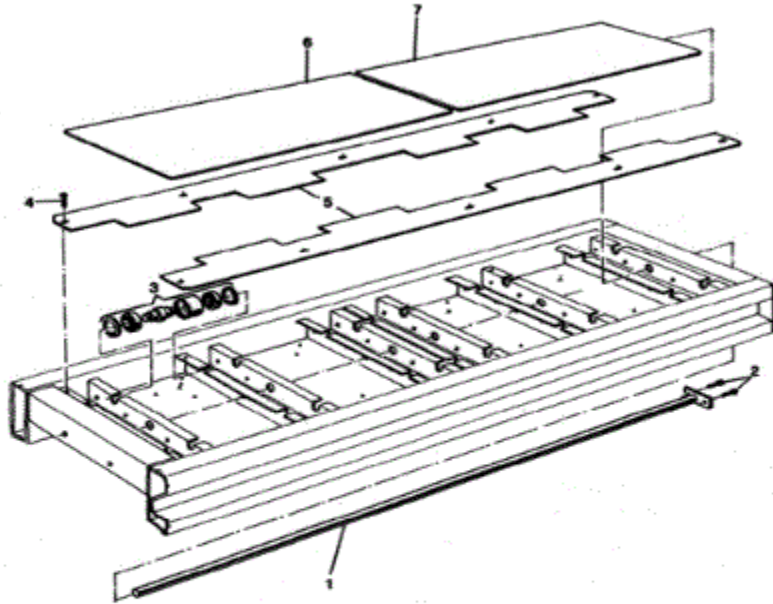
Item	Part	Description
1		NUT M14 DIN 934 UNI 5588
2		SELF-LEVELLING BRACKET
3		SCREW M14X90 DIN 933 UNI 5739
4		SCREW M14X120 DIN 933 UNI 5739
5		LOWER ARM FIXING
6		WASHER RPN 14 DIN 125 UNI 6592
7		SEEGER E 30 DIN 471 UNI 7435
8	91 08 2065	SELF-LUBR. BUSHING 30x30
9		ARMS FIXING PIN
10	91 08 2217	MECHANICAL SAFETY
11		ADJUSTING-FEET COMPL.
12		WASHER RPN 8 DIN 125 UNI 6592
13		SCREW M8X16 DIN 933 UNI 5739
14		LOWER ROLLER

Scissor Lift Nomenclature



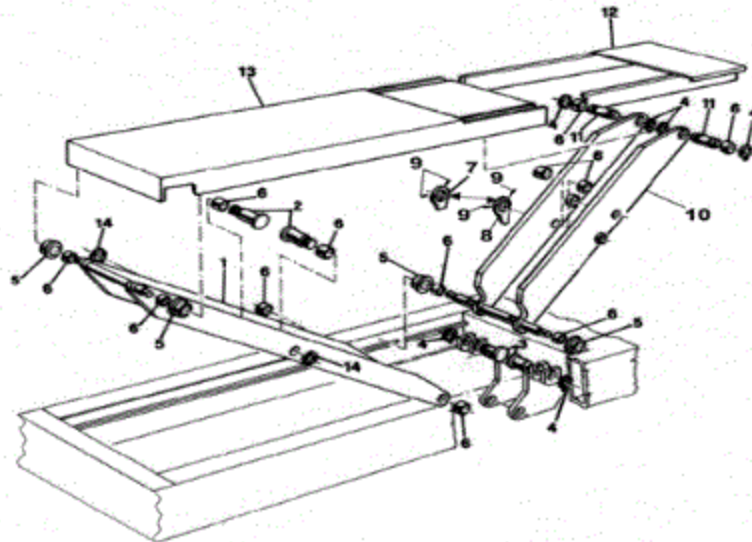
Item	Part	Description
1	91 08 2032	COPPER WASHER 3/8"
2	91 08 2151	CONNECTION 3/8"
3		NUT 3/8"
4		SEEGER E 45 DIN 471 UNI 7435
5	91 08 2220	HOSE R2 AT 1/4" L=3450mm
6	91 08 2221	NIPPLES 1/4"
7	91 08 2222	HOSE R2 AT 3/8" L=3520mm
8	91 08 2223	HOSE R2 AT 3/8" L=3150mm
9		CYLINDER P1
10		LOWER CYLINDER FIXING PIN
11		UPPER CYLINDER FIXING PIN
12	91 08 2031	HOLED BOLT 3/8"
13		CYLINDER P2
14	91 08 2224	GASKET KIT P1
15	91 08 2225	GASKET KIT P2
16	91 08 2166	"T" CONNECTION 3/8"

Scissor Lift Nomenclature



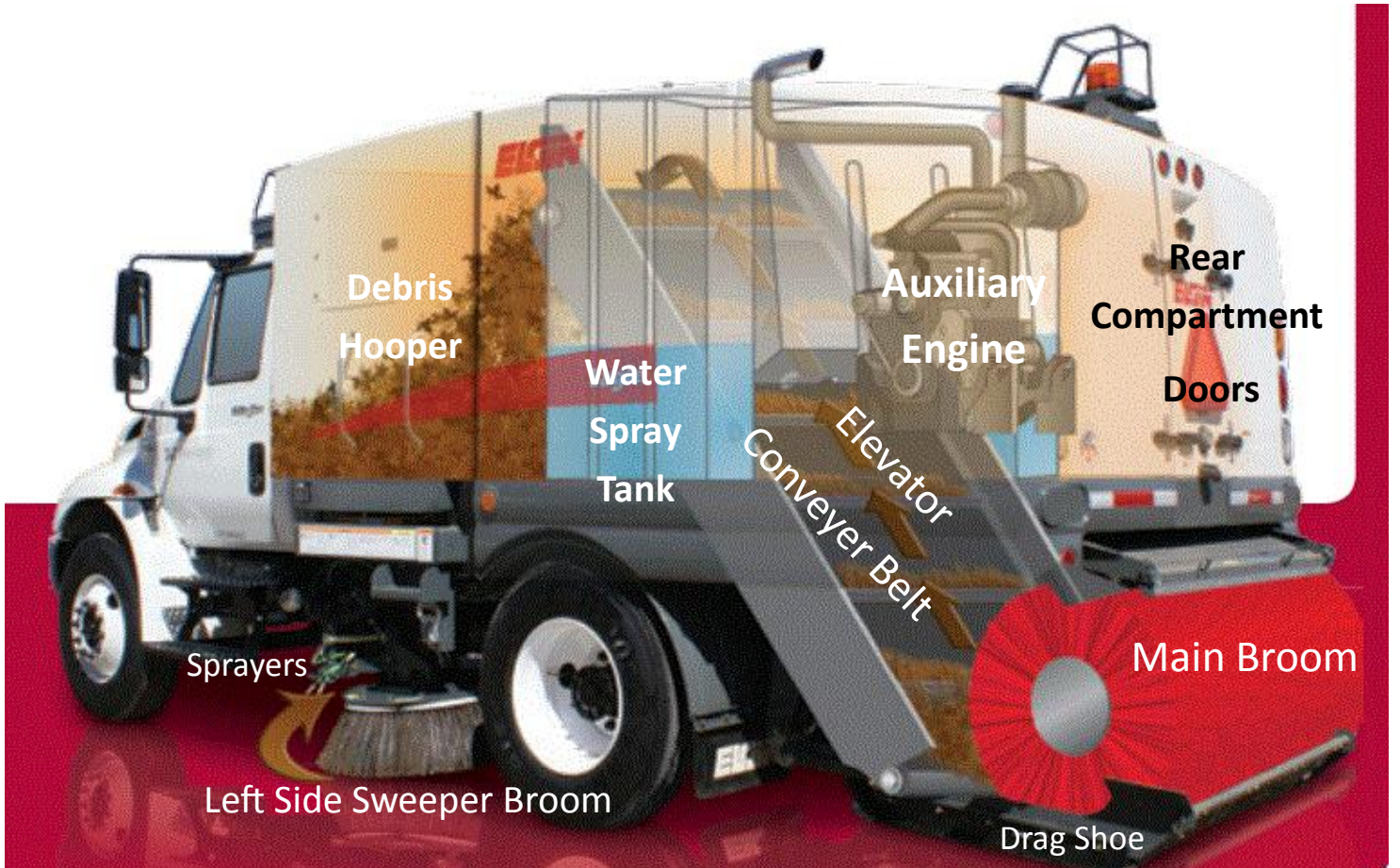
Item	Part	Description
1		SLIP PLATES FIXING PIN
2		SCREW M 2X16 DINI 7001 UNI K022

1.4 Wheel-Free Jack



Item	Part	Description
1		EXTERNAL ARM
2		ARMS CONNECTION PIN
3		LOWER FIXING LIFT TABLE PIN
4		SEGER E 30 DIN 471 UNI 7435
5		LIFT TABLE ROLLER
6	91 08 2065	SELF-LUBR. BUSHING 30X30
7		NOT BEVELED CAM
8		BEVELED CAM
9		DOWEL M5X10 DIN 913 UNI 5923
10		INTERNAL ARM
11		UPPER ARM FIXING PIN
12		EXTENSION WHEEL-FREE JACK
13		RUNWAY WHEEL-FREE JACK
14		SELF-LOCK NUT M25X1,5 DIN 982 UNI 7473

Street Sweeper Nomenclature



Paving Machine Nomenclature

